

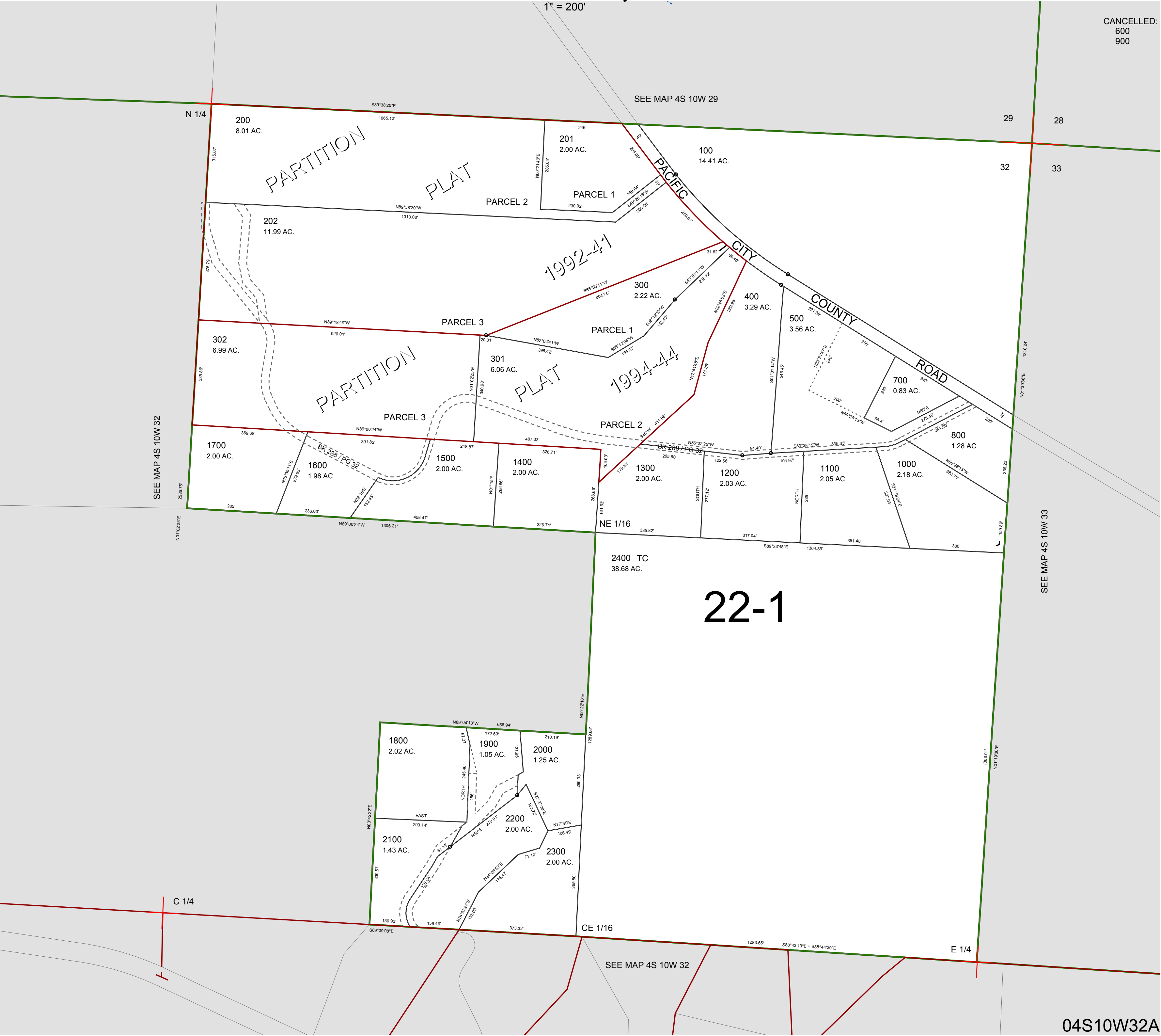
FOR ASSESSMENT AND TAXATION ONLY, NOT SUITABLE FOR
LEGAL, ENGINEERING, OR SURVEY PURPOSES

N.E. 1/4 SEC. 32 T. 4S. R. 10W. W.M.
Tillamook County

1" = 200'

04S10W32A

CANCELLED:
600
900



04S10W32A
REVISED 6/16/17, WS