

THIS MAP WAS PREPARED FOR
ASSESSMENT PURPOSE ONLY

0 200 400 600 800 Feet

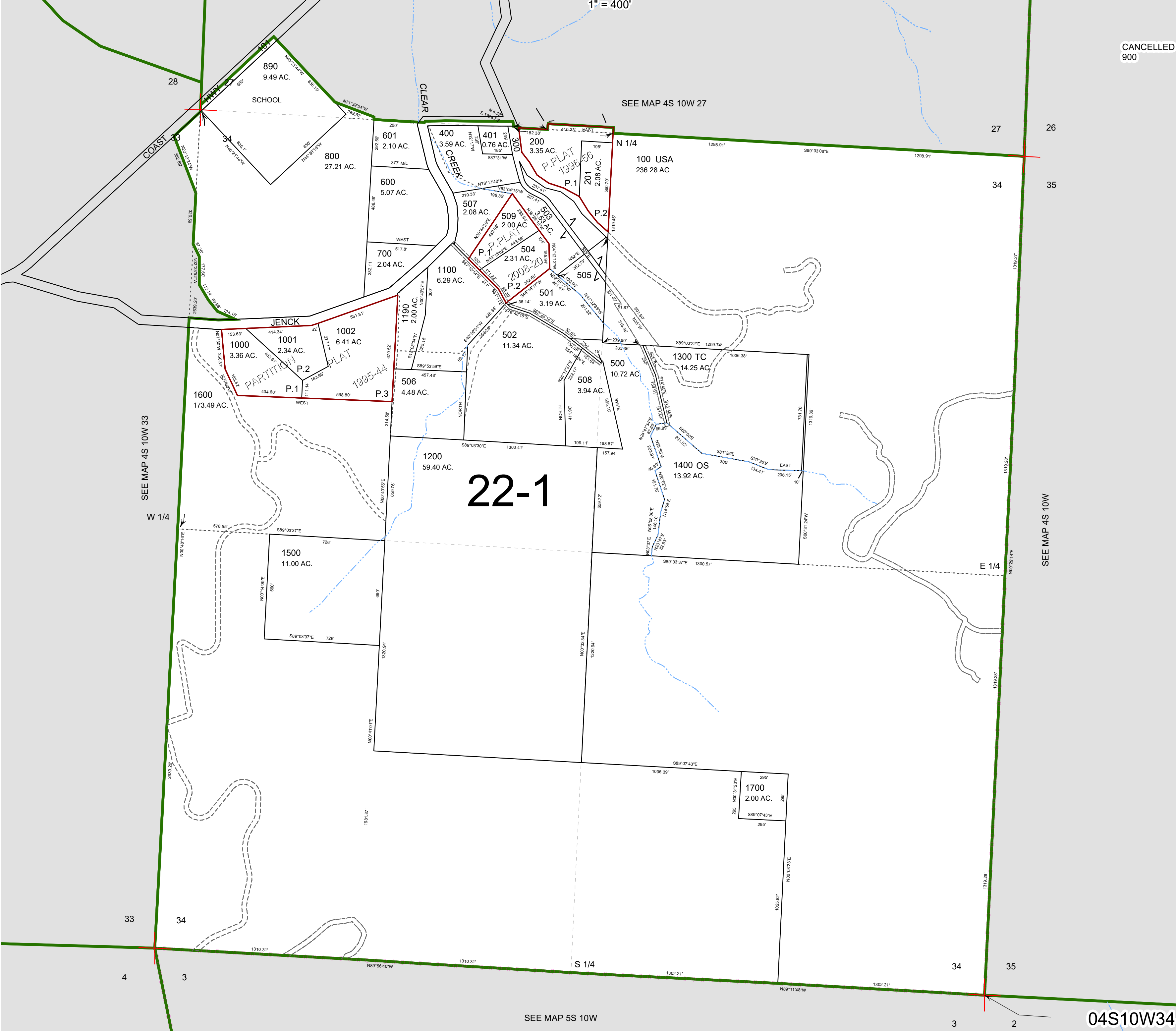
SECTION 34 T.4S. R.10W. W.M.

TILLAMOOK COUNTY

04S10W34

1" = 400'

CANCELLED
900



04S10W34

Revised 08/07/20, WS