

FOR ASSESSMENT AND TAXATION ONLY, NOT SUITABLE FOR
LEGAL, ENGINEERING, OR SURVEY PURPOSES

SECTION 8 T.5S. R.10W. W.M.
Tillamook County

 $1'' = 400'$

05S10W08

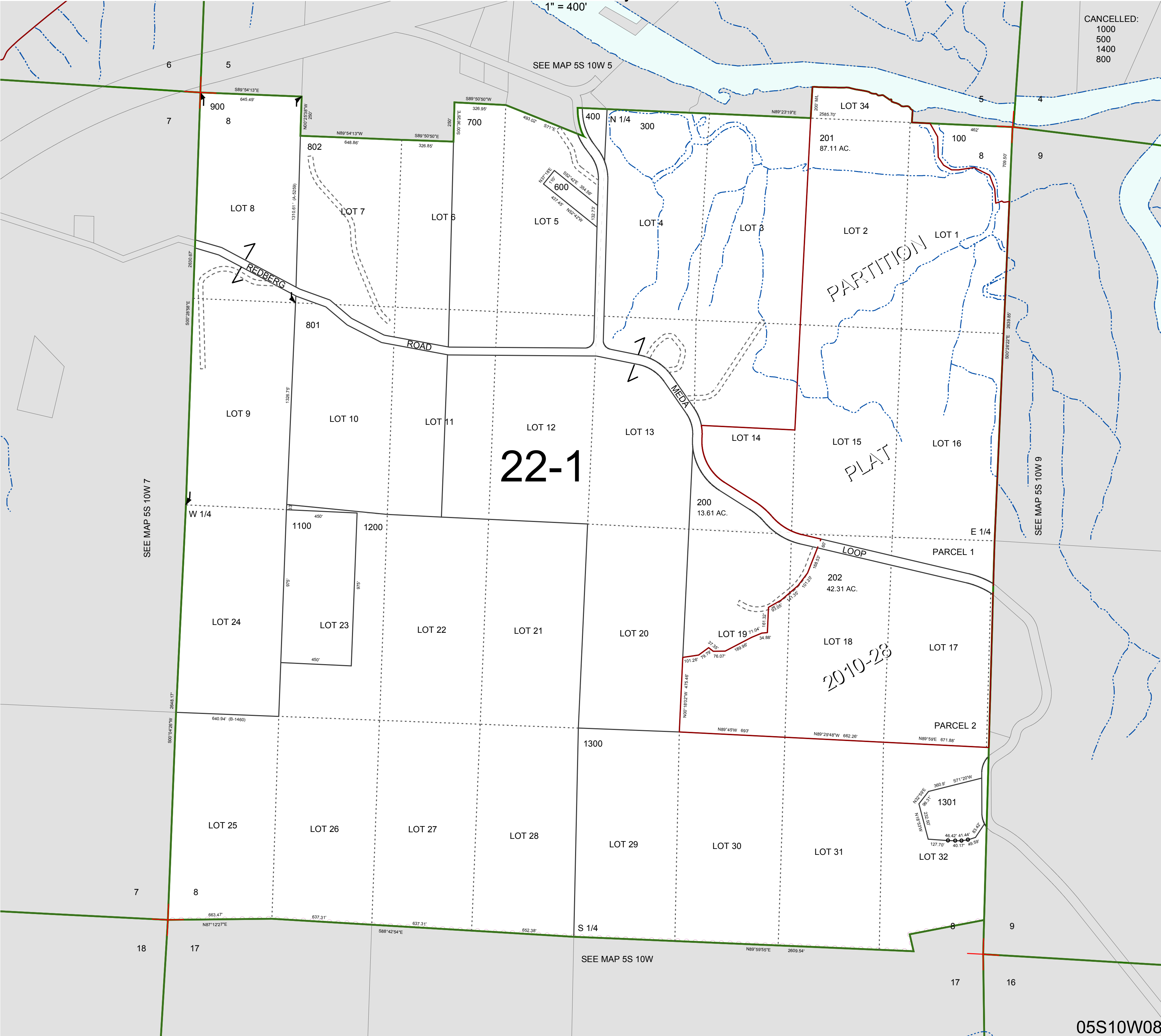
CANCELLED:

1000

500

1400

800



05S10W08
REVISED 6/16/17, WS