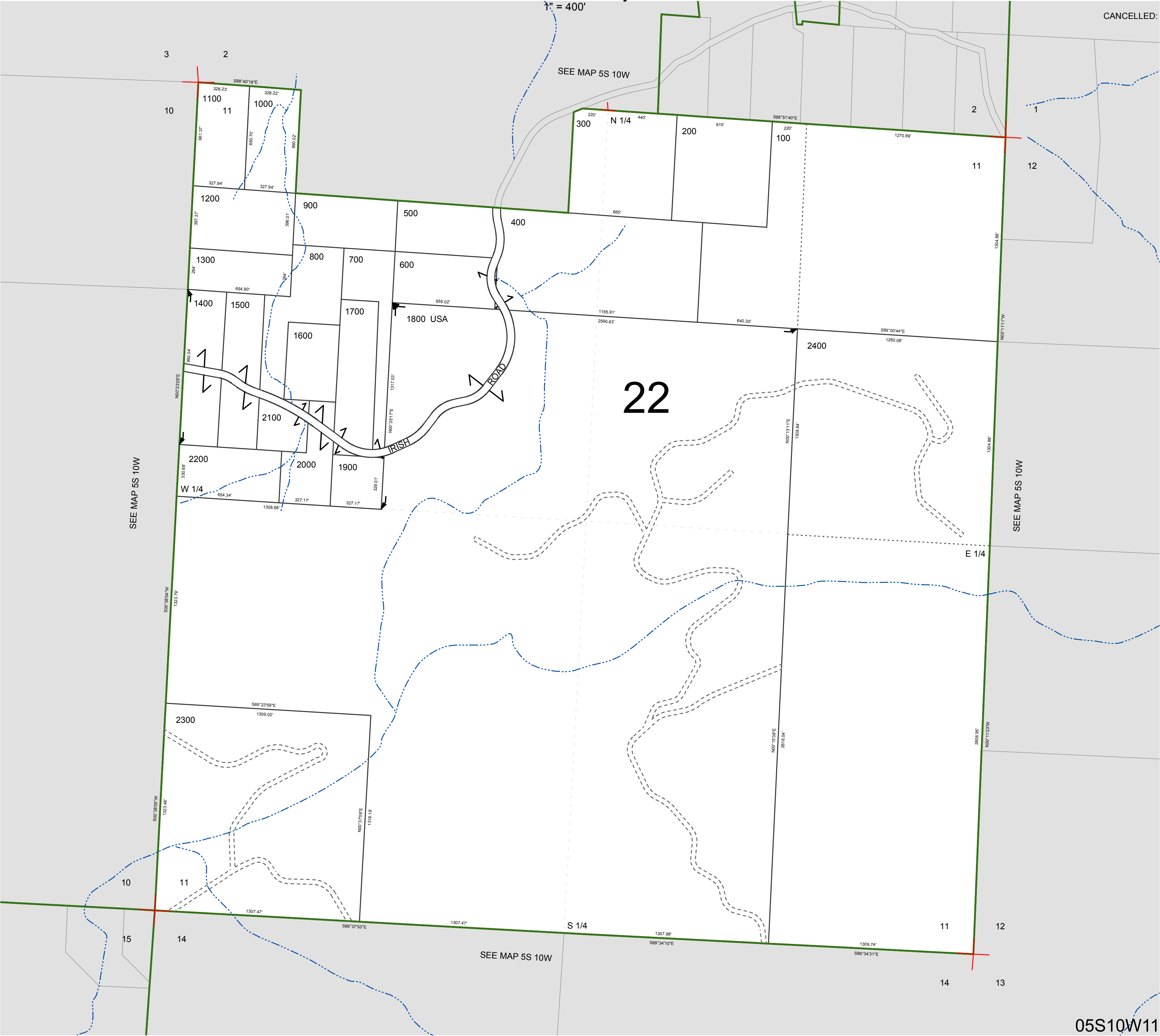


FOR ASSESSMENT AND TAXATION ONLY, NOT SUITABLE FOR  
LEGAL, ENGINEERING, OR SURVEY PURPOSES

SECTION 11 T.5S. R.10W. W.M.  
Tillamook County

05S10W11

CANCELLED:



05S10W11  
REVISED 6/16/17, WS