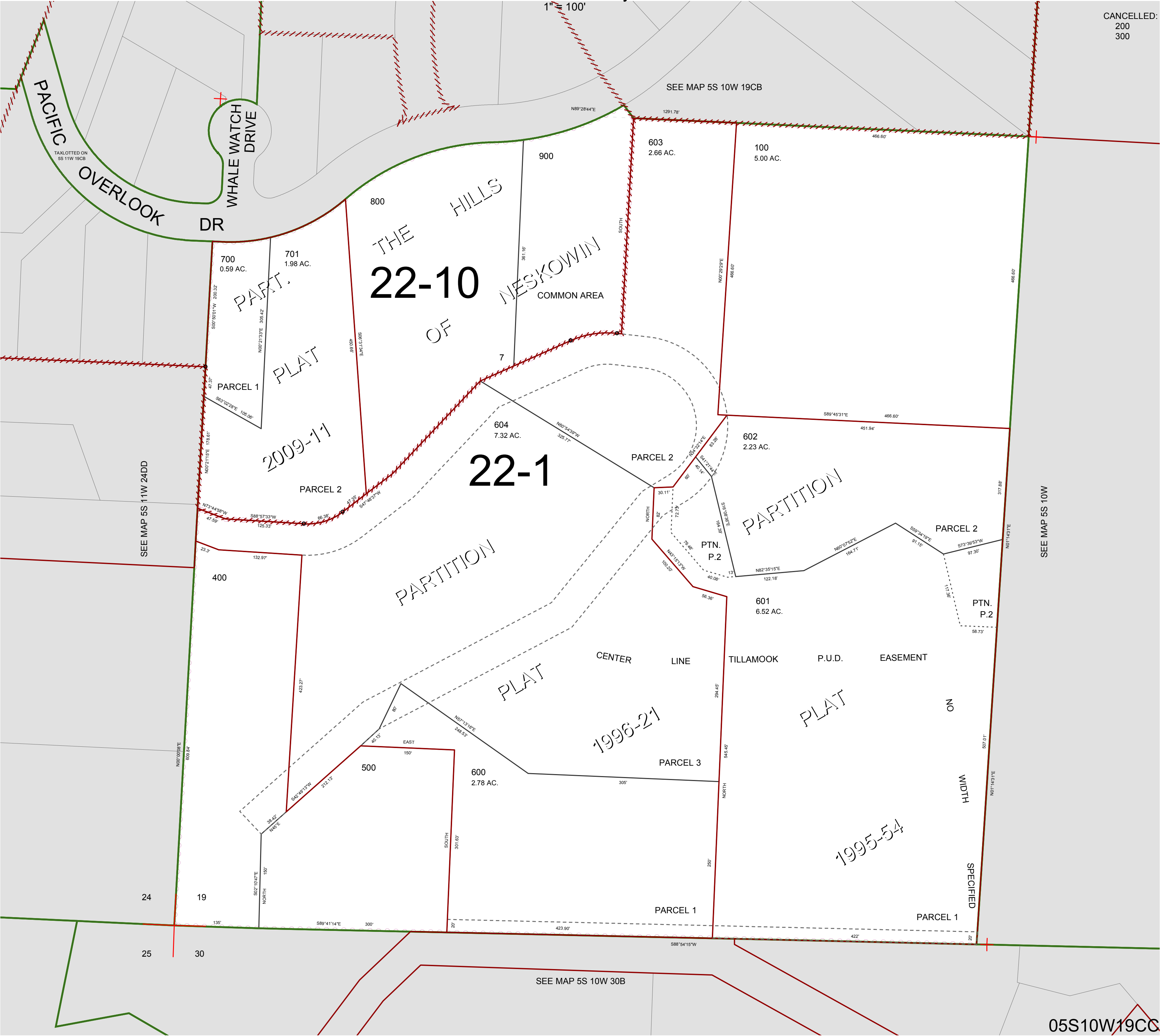


FOR ASSESSMENT AND TAXATION ONLY, NOT SUITABLE FOR
LEGAL, ENGINEERING, OR SURVEY PURPOSES

S.W.1/4 S.W.1/4 SEC.19 T.5S. R.10W. W.M.
Tillamook County

05S10W19CC

CANCELLED:
200
300



05S10W19CC

REVISED 6/16/17, WS