

FOR ASSESSMENT AND TAXATION ONLY, NOT SUITABLE FOR
LEGAL, ENGINEERING, OR SURVEY PURPOSES

N.W.1/4 SEC.30 T.5S. R.10W. W.M.
Tillamook County

05S10W30B

CANCELLED:
102

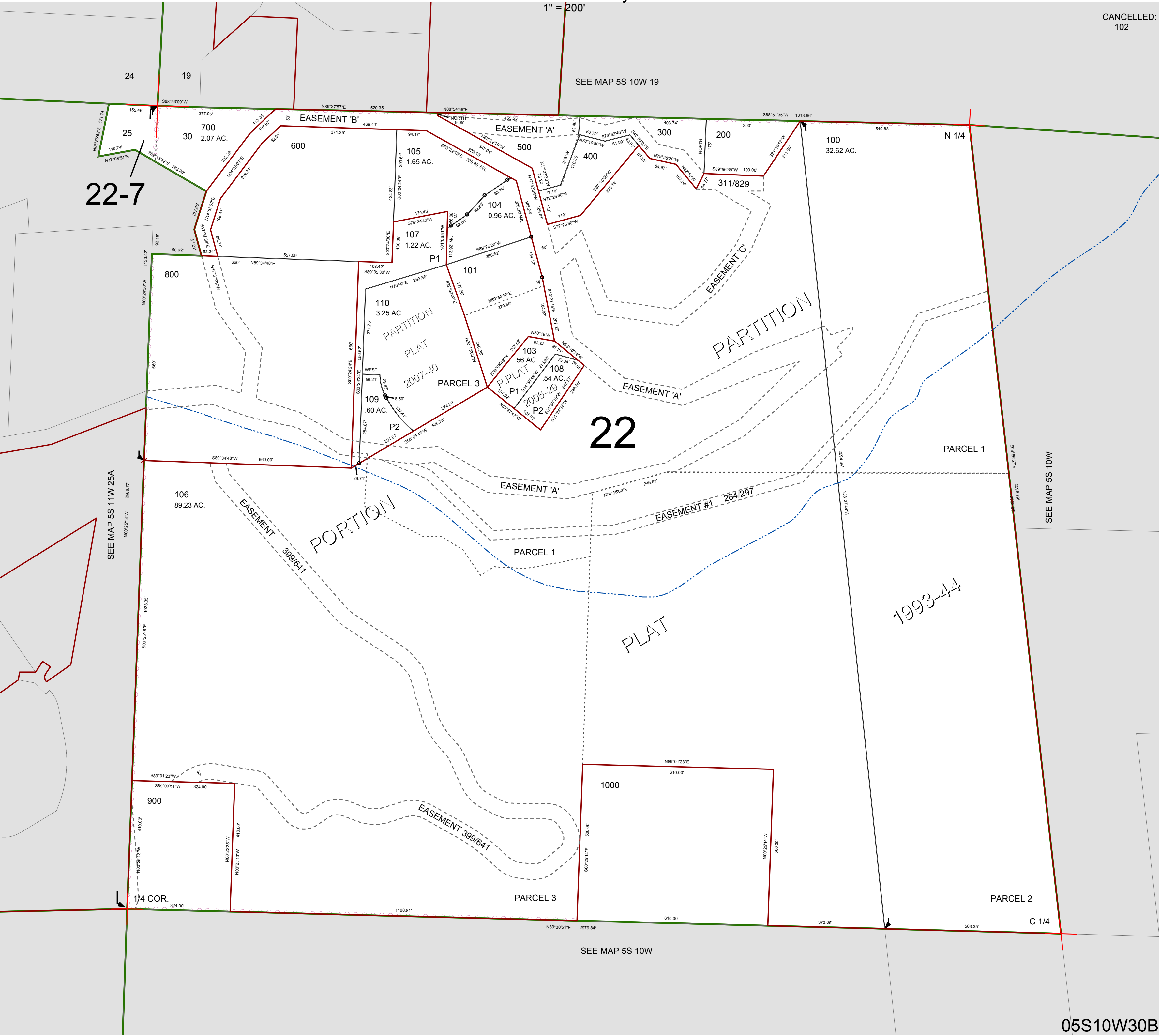
1" = 200'

SEE MAP 5S 10W 19

22-7

22

1993-44



05S10W30B
REVISED 03/02/18, WS