

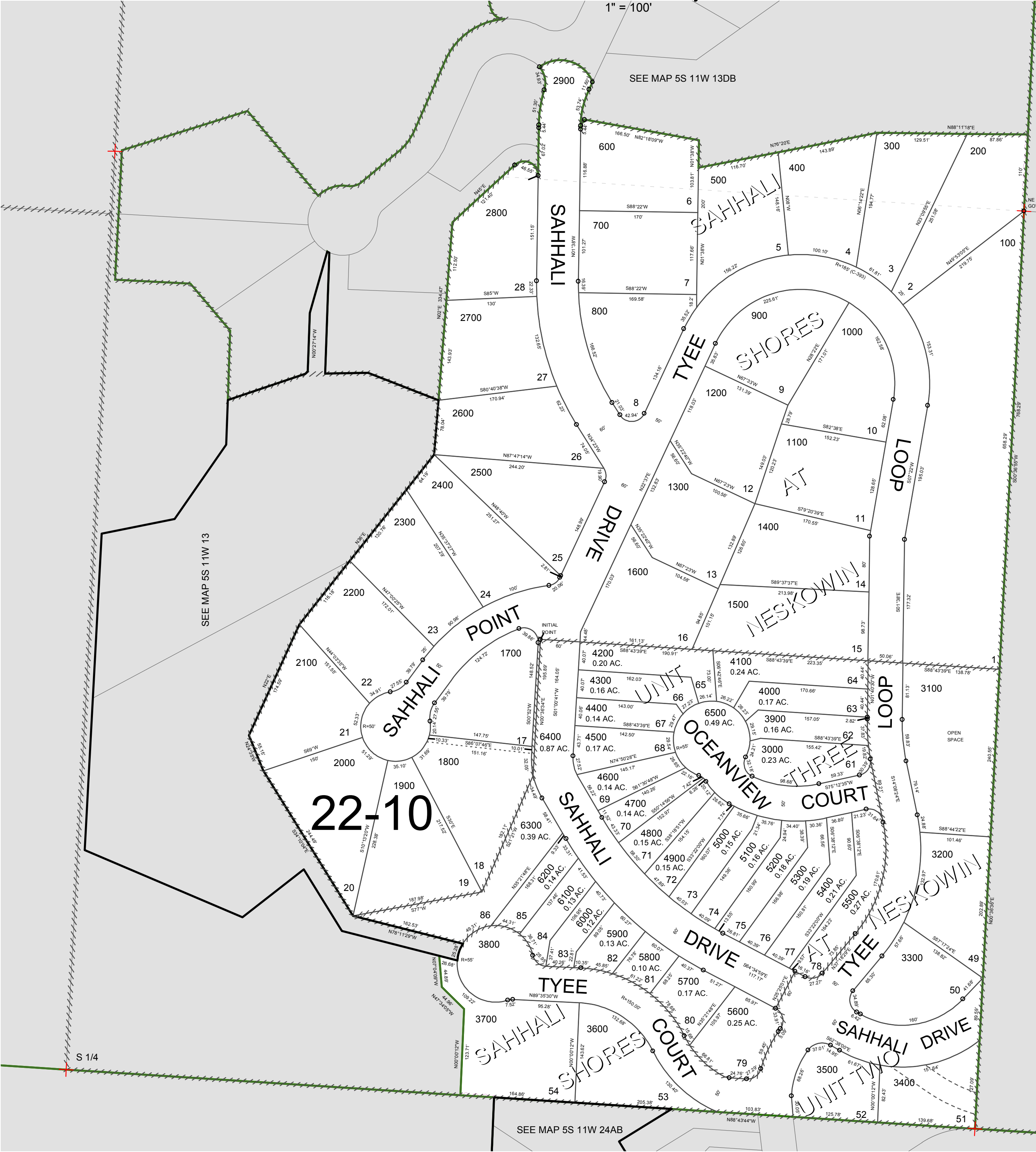
FOR ASSESSMENT AND TAXATION ONLY. NOT SUITABLE FOR  
LEGAL, ENGINEERING, OR SURVEY PURPOSES

S.W.1/4 S.E.1/4 SEC.13 T.5S. R.11W. W.M.  
Tillamook County

05S11W13DC  
SAHHALI SHORES

CANCELLED:

1" = 100'



SAHHALI SHORES  
05S11W13DC

REVISED 03/09/12, WS