

FOR ASSESSMENT AND TAXATION ONLY, NOT SUITABLE FOR  
LEGAL, ENGINEERING, OR SURVEY PURPOSES

N.E.1/4 S.E.1/4 SEC.24 T.5S. R.11W. W.M.  
Tillamook County

1" = 100'  
SEE MAP 5S 11W 24

05S11W24DA

CANCELLED:  
100

800 USA  
19.54 AC.

E 1/4

COAST

HIGHWAY

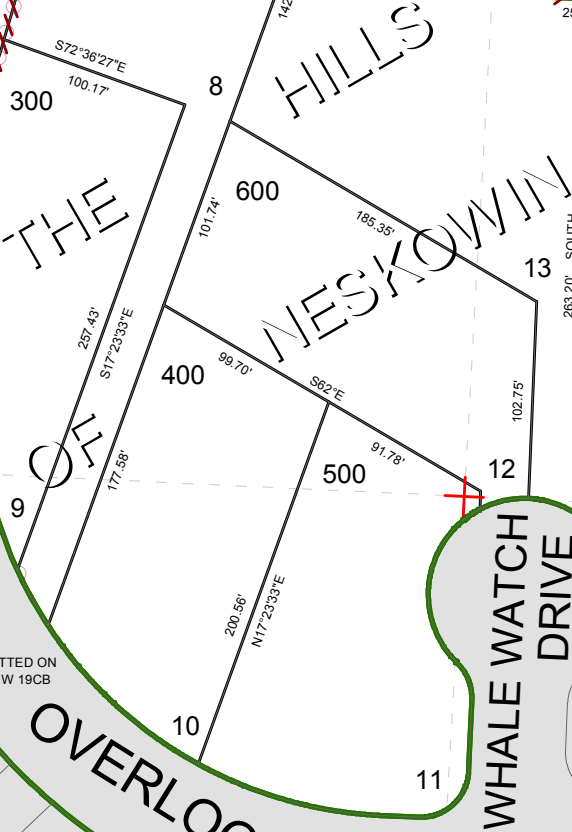
101

22-7

SEE MAP 5S 11W 24

SEE MAP 5S 11W 19CB

TIBBETTS



SEE MAP 5S 11W 24DD

05S11W24DA

REVISED 12/29/17, WS