

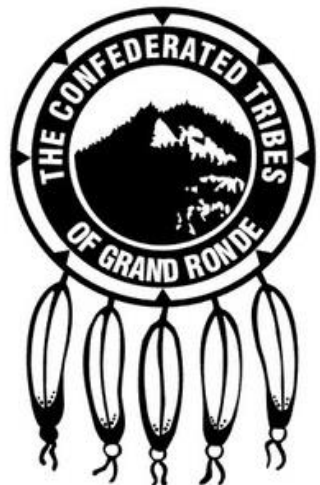


THE Salmonberry Trail
IS THE MOST AMBITIOUS
RAIL-TO-TRAIL PROJECT TO DATE

THIS IS A BIG IDEA

The Salmonberry embodies the enduring spirit of Oregon. As a confluence of history, adventure, and local impact, this isn't merely a trail; it's a bridge to Oregon's magnificent future.

WE AREN'T DOING THIS ALONE



SalmonberryTrail



OUR PARTNERS

| | |
|--|--|
| City of Banks | Oregon Coast Visitor Association |
| City of Garibaldi | Oregon Department of Energy |
| City of Manzanita | Oregon Department of Environmental Quality |
| City of Nehalem | Oregon Department of Fish and Wildlife |
| City of Rockaway Beach | Oregon Department of Transportation |
| City of Tillamook | Oregon Equestrian Trails |
| City of Wheeler | Oregon Recreation Trails Advisory Council |
| Columbia Pacific Economic Development District | Oregon Trails Coalition |
| Cycle Oregon | Peace Fox and Ernie Fox Fund, OCF |
| Economic Development Council of Tillamook | Port of Tillamook Bay Corporation |
| Governor's Office | Public Coast Farms |
| Love, Oregon | Rockaway Roastery |
| MJ Murdock Trust | The Oxalis Group |
| MODA Health Services | The Salmonberry Restaurant |
| Mumble Street Stories | Tillamook County |
| Neil Kelly | Trailkeepers of Oregon |
| North Star Foundation | Visit Tillamook Coast |
| Northwest Steelheaders | Washington County |
| Oregon Coast Scenic Railroad | Washington County Visitor Association |
| Oregon Coast Trail | Western Rivers Conservancy |

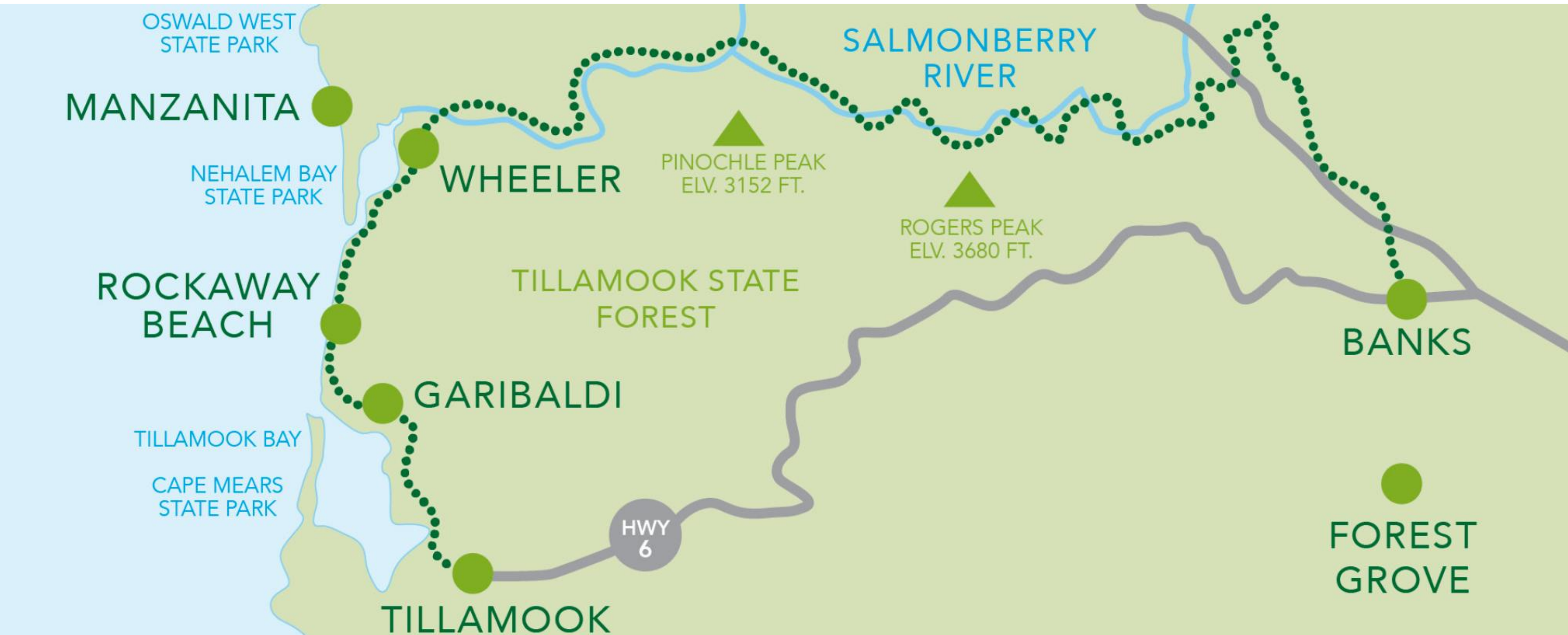
SalmonberryTrail



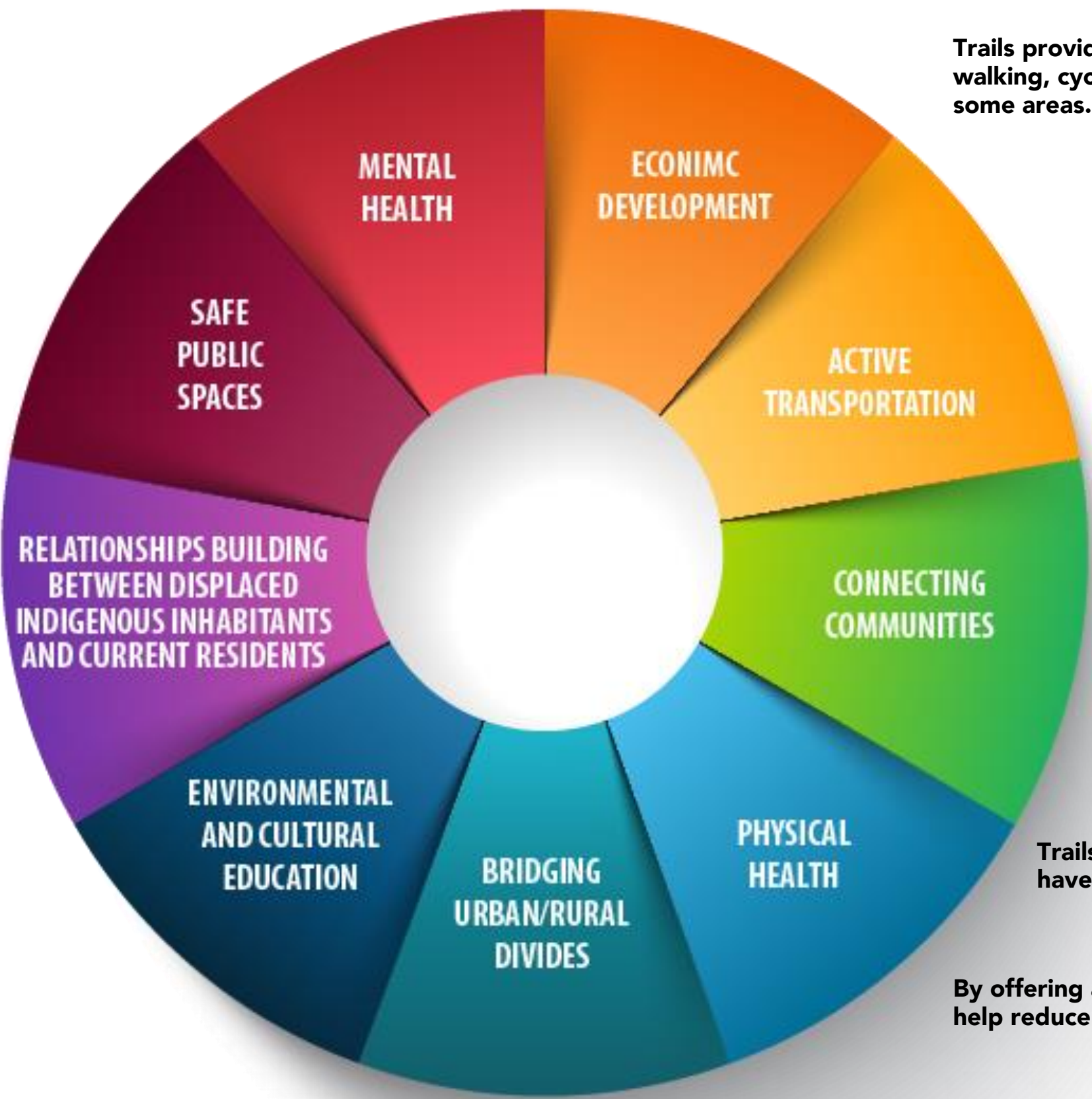
MASSIVE IN SCALE

FROM BANKS TO TILLAMOOK

TRAVELING THROUGH THE WILD HEART OF OREGON



WITH TREMENDOUS BENEFITS



Trails provide a safe and scenic environment for walking, cycling, jogging, and even horseback riding in some areas.

Trails stimulate local economies by attracting tourists, boosting local businesses, and increasing property values adjacent to the trail.

Trails promote green transportation, reduce vehicle emissions, and help in the preservation of green spaces.

Trails often pass through historic areas, serving as an educational resource and preserving the history of the railroad corridor.

Trails offer safer, car-free alternatives for commuting or traveling between towns.

With easily accessible trails, people are more likely to engage in regular physical activity, promoting overall public health.

Rails-to-trails projects connect towns, neighborhoods, and sometimes even larger urban areas, fostering a sense of community and making travel between these areas more feasible without a car.

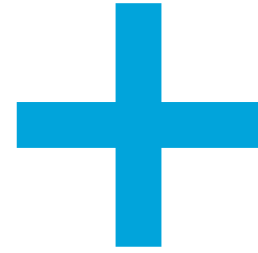
Converting existing rail corridors can be more cost-effective than building new parks or trails from scratch.

Trails conserve sensitive environments, providing a haven for local flora and fauna.

Trails offer community gathering spaces where events, races, or festivals can be held.

By offering an alternative to car travel, these trails can help reduce the number of vehicles on the road.

Trail projects add to the livability of an area, making towns and cities more attractive to residents and potential newcomers.



TRAILS LIKE

THE GREAT ALLEGHENY PASSAGE

(150 miles in Pennsylvania and Maryland)

**GENERATE MORE ECONOMIC IMPACT IN A
SINGLE YEAR THAN IT COST TO CREATE**

2015 – Governor Kate Brown designates the Salmonberry Trail governance determination process an Oregon Solutions project

2017 – Tillamook Local Code Adoption Project completed. The POTB managed the code project. Supplemental Planning in Coastal Segment completed. The rail banking process is completed by the federal Surface Transportation Board for the Salmonberry Trail Corridor.

2018 – Valley Segment Master Plan is completed. Economic & Health Benefits Study completed. Salmonberry collaborated with Cycle Oregon's 1st Annual Gravel Ride featuring the future Salmonberry Trail's Reliance Trestle. Lease agreement between the Port of Tillamook Bay and the Salmonberry Trail Intergovernmental Agency is completed and signed.

2019 – Opening of Salmonberry Trail's first 1/2 Mile: The Hoquarton Trail in the City of Tillamook's, the western-most end of the future Salmonberry Trail. The Salmonberry Trail Foundation becomes a 501(c)3.

2020 - Awarded ODOT Community Paths Grant for Rockaway Segment. Congressional funding requested. Travel Oregon matching grant \$126,000 awarded.

2023 - Trailblazer Program begins. Volunteers clear 800 yards of right of way. Congressional funding requested. ODOT CPP grant application for Bay City. Technical Advisory Team with 25+ volunteers created to further plans for the trail. Bridge inspection complete in Washington County. Guided trail tours for elected officials and community partners in Tillamook and Washington County. Bridge, Culvert and Tunnel Teams. STIA budget passed with member allocations.

“The Salmonberry Trail will benefit Oregonians, visitors, and our local economy. This project is more than a trail; it’s a path to better health, social connection, and economic well-being.”

- Congresswoman Suzanne Bonamici

Congresswoman Suzanne

Bonamici visits the Salmonberry Trail

visiting a
Salmonbe
ington Co
which is e
partially r
visited on
hosted by

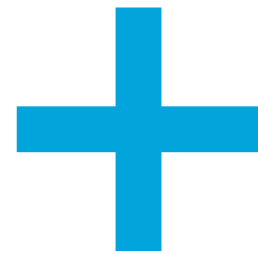


ACREA
a wood
Perfect
surround
tall tree
its' side
timber
Across
Park wi
MLS #

R E

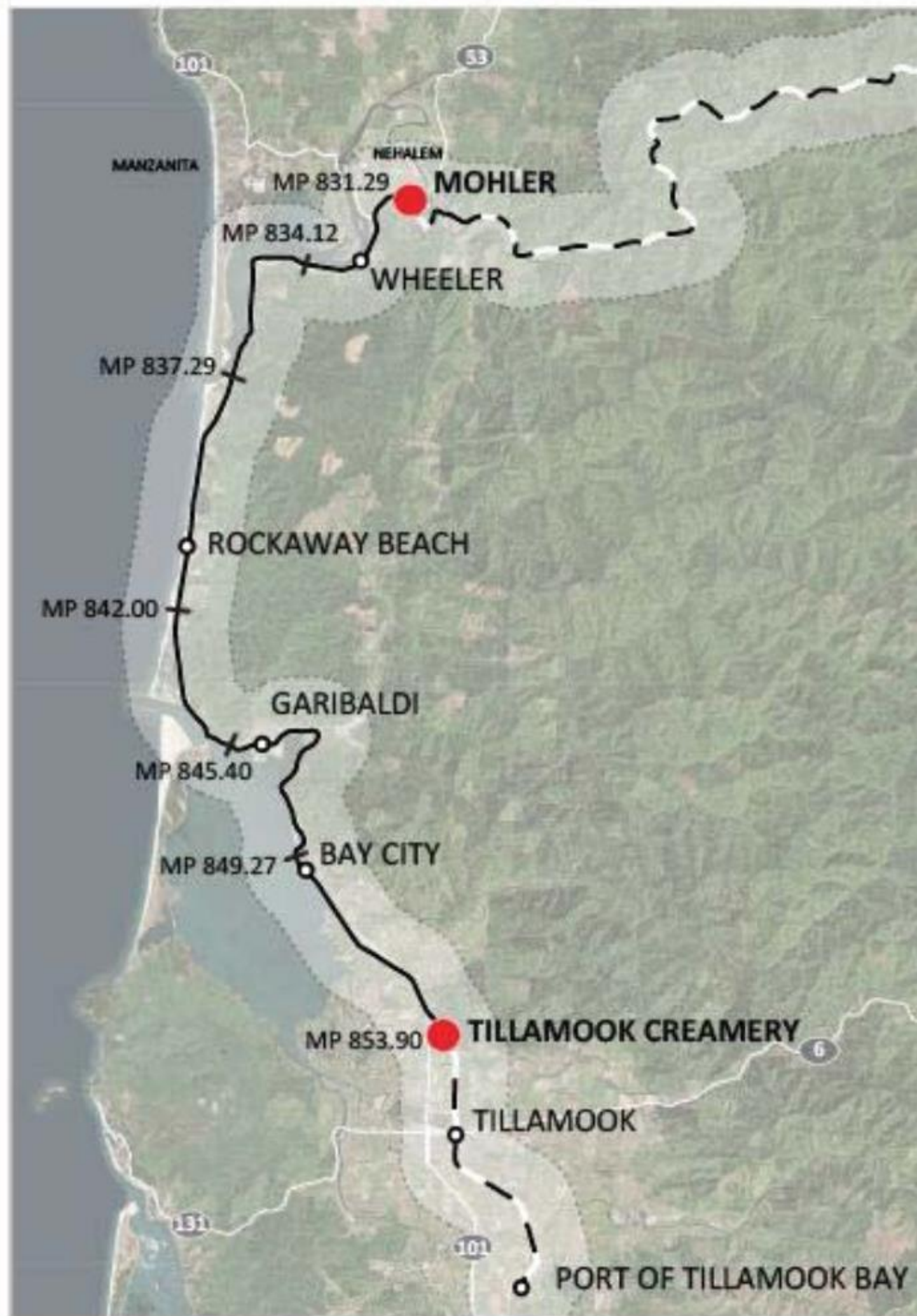
WHO WE ARE

BOARD

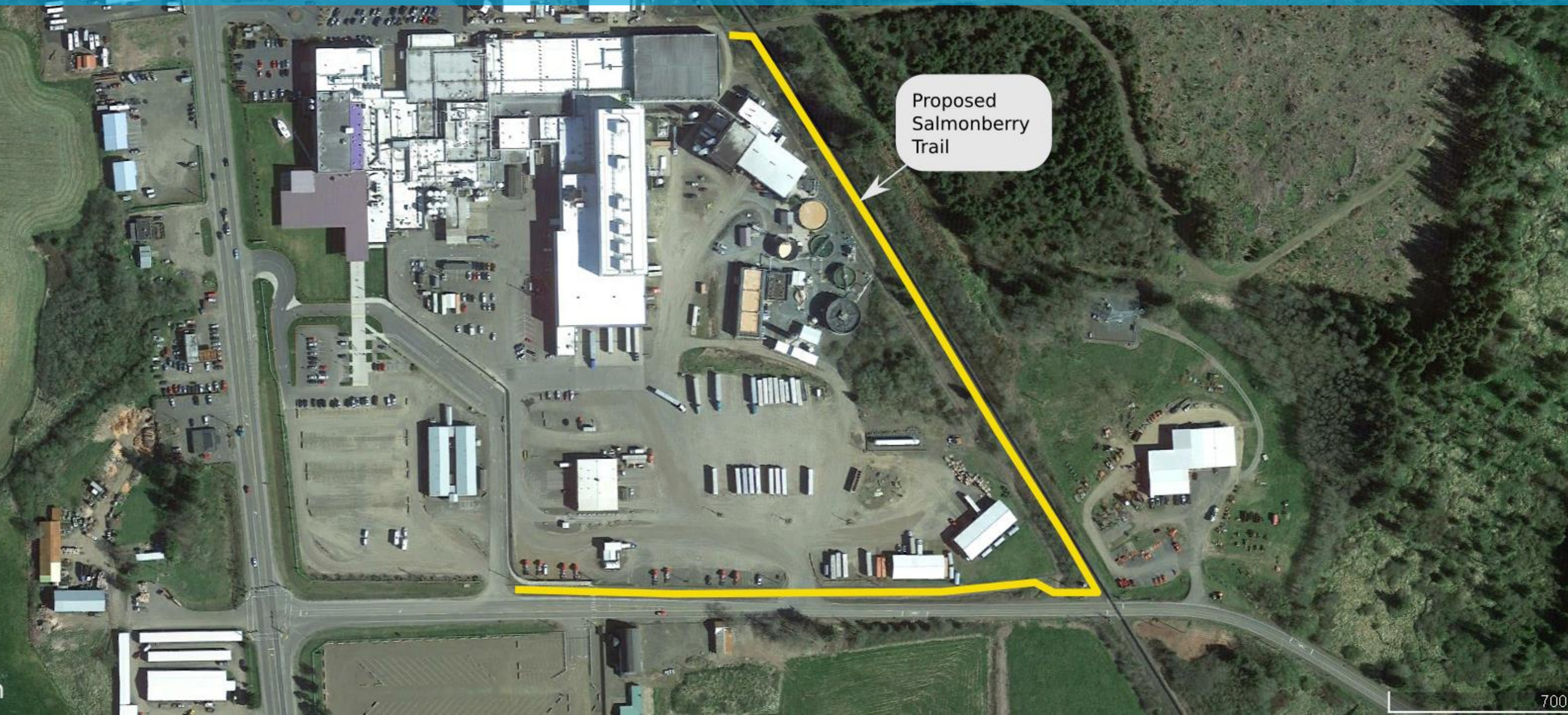


STAFF

CURRENT PROJECTS



Tillamook Creamery Path



Proposed
Salmonberry
Trail



Rockaway Beach

Wayside and
Downtown
Rockaway

Oregon Coast
Scenic Railway
Station (new)

Shared Trail
and Railroad
Trestle

Rockaway Beach

MANHATTAN BEACH

Highschool

- New Gravel Path
- Shared Rail Trestle / Path
- Shared Path / Street
- Station Platform and Path
- New HWY 101 crossing







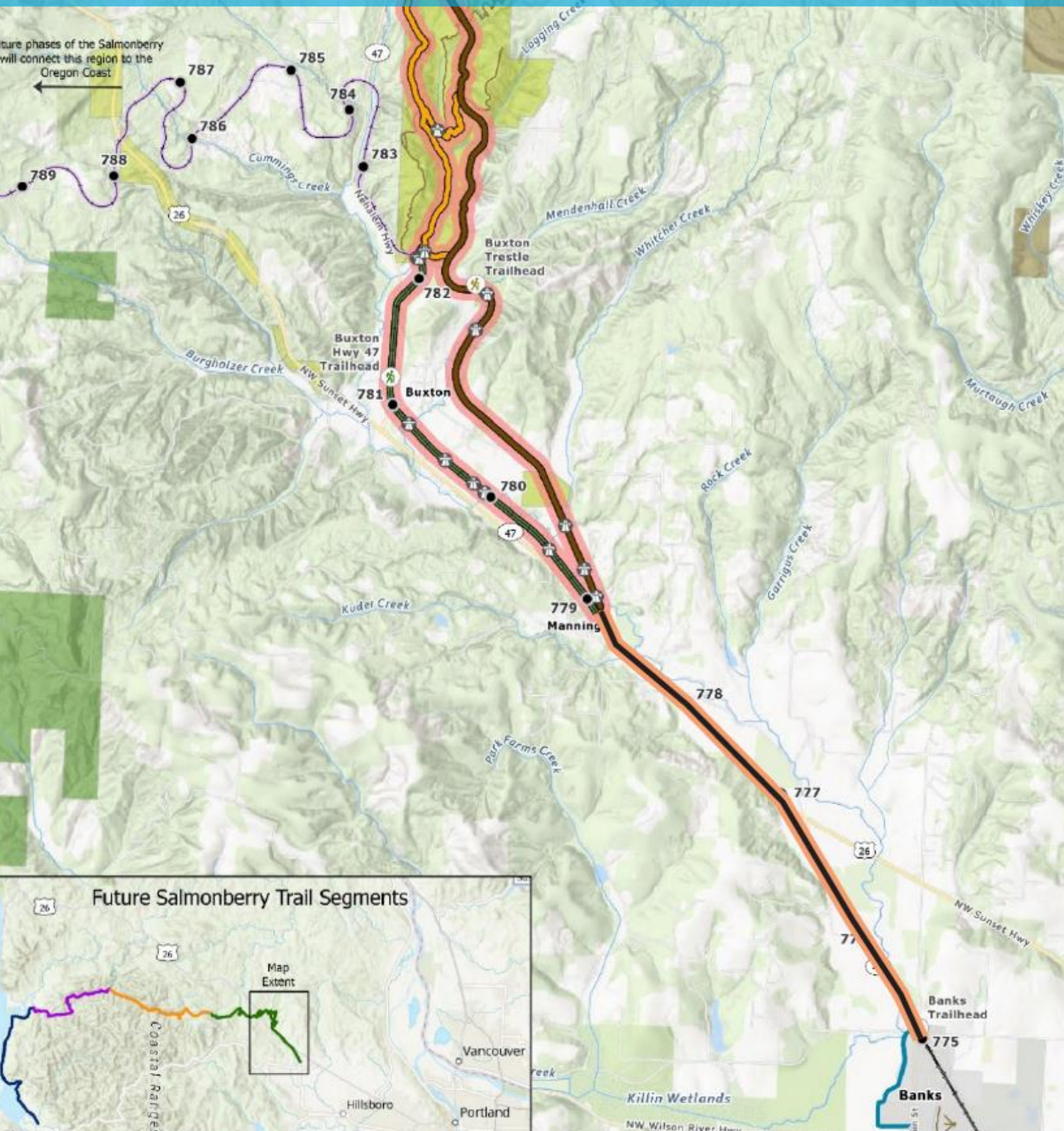


More Projects

**Foss Road Demonstration
Project
and**

Wheeler Demonstration Project

Salmonberry East / Catalyst



Banks to Stub Stewart Loop using the Catalyst:
19.5 mi (L), 17 mi (M), 14.5 mi (S)

Banks to Manning Loop: **8mi**

Manning to Stub Stewart Loop:
11.74 mi (L), 9.2 mi (M), 7 mi (S)

Number of Estimated Banks-Vernonia users in 2022:
325,000

NOTICE

**THE SALMONBERRY TRAIL IS CURRENTLY CLOSED
TO ALL USERS**

Questions?

SALMONBERRYTRAIL.ORG



SOME BACKGROUND

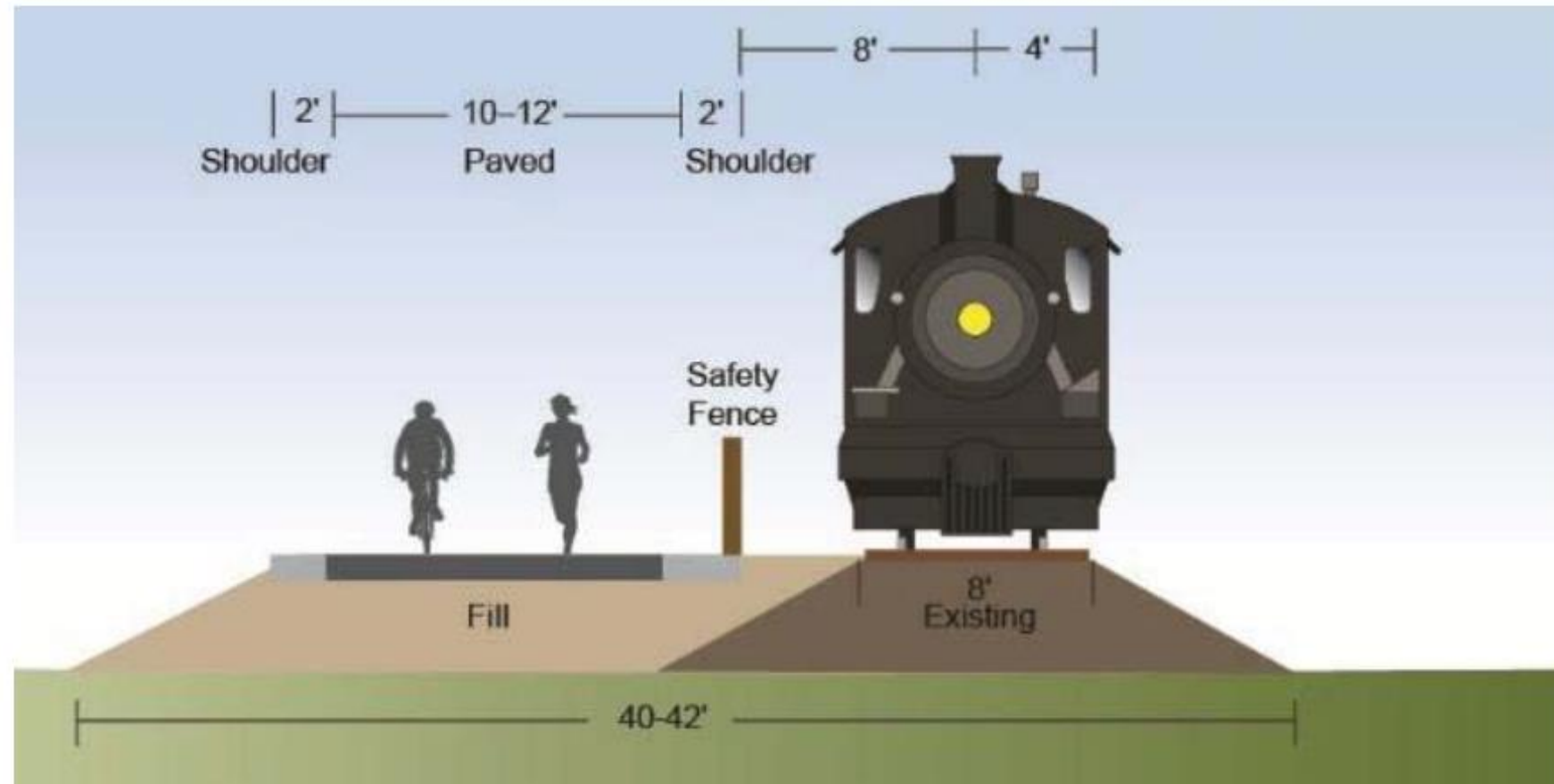
Early 2000's - Tillamook county residents petitioned the port and the county to look at rail banking as a way to promote healthy child development, physical and mental health and economic health.

Fall 2012 - A Memorandum of Agreement was signed between ODF, OPRD, Tillamook County, Port of Tillamook Bay, and Cycle Oregon, with contributions of funding (\$200,000) to support initial study and planning efforts for the project.





Standard Rail-with-Trail



Rail-with-Trail with Platform

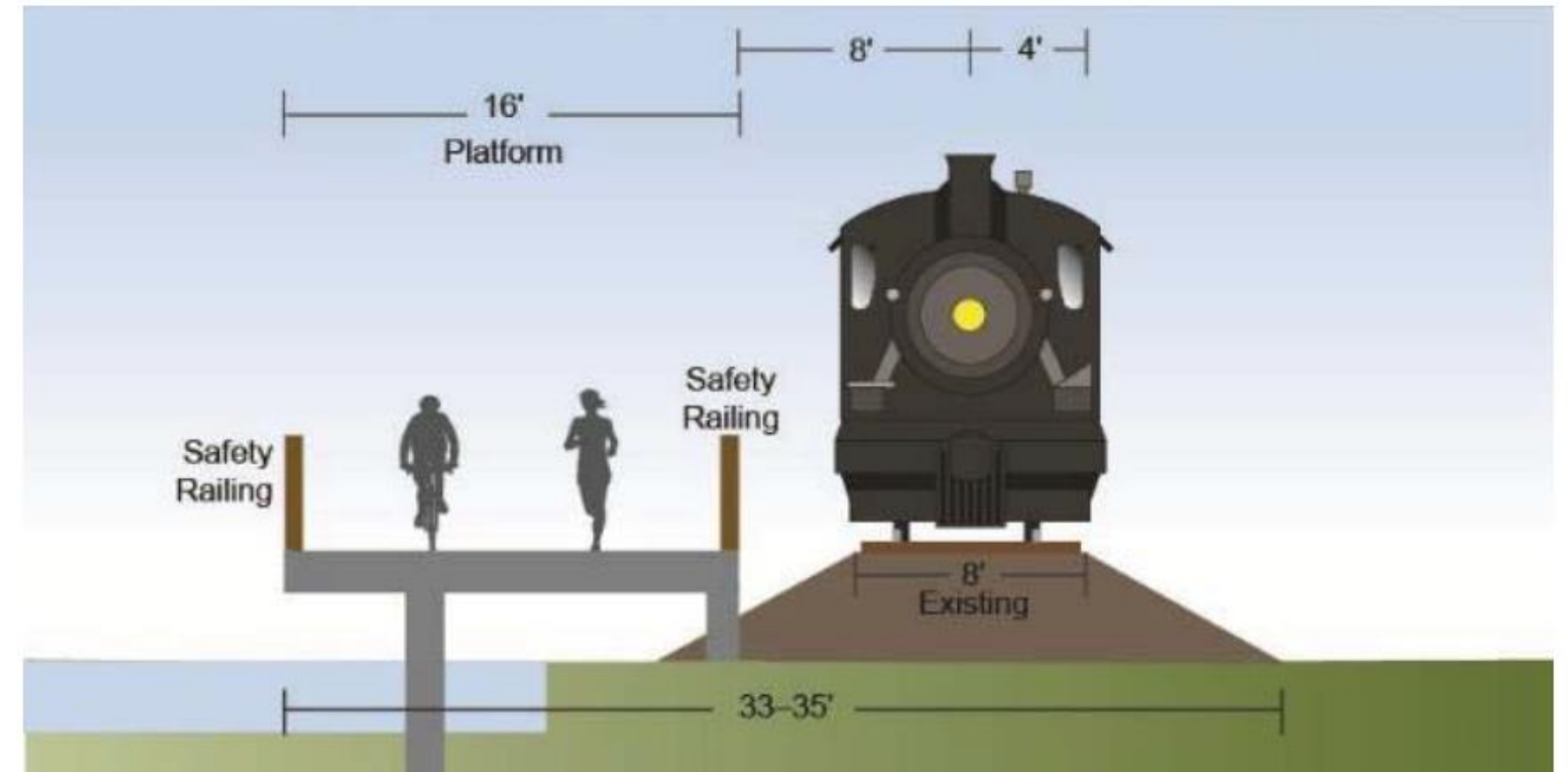
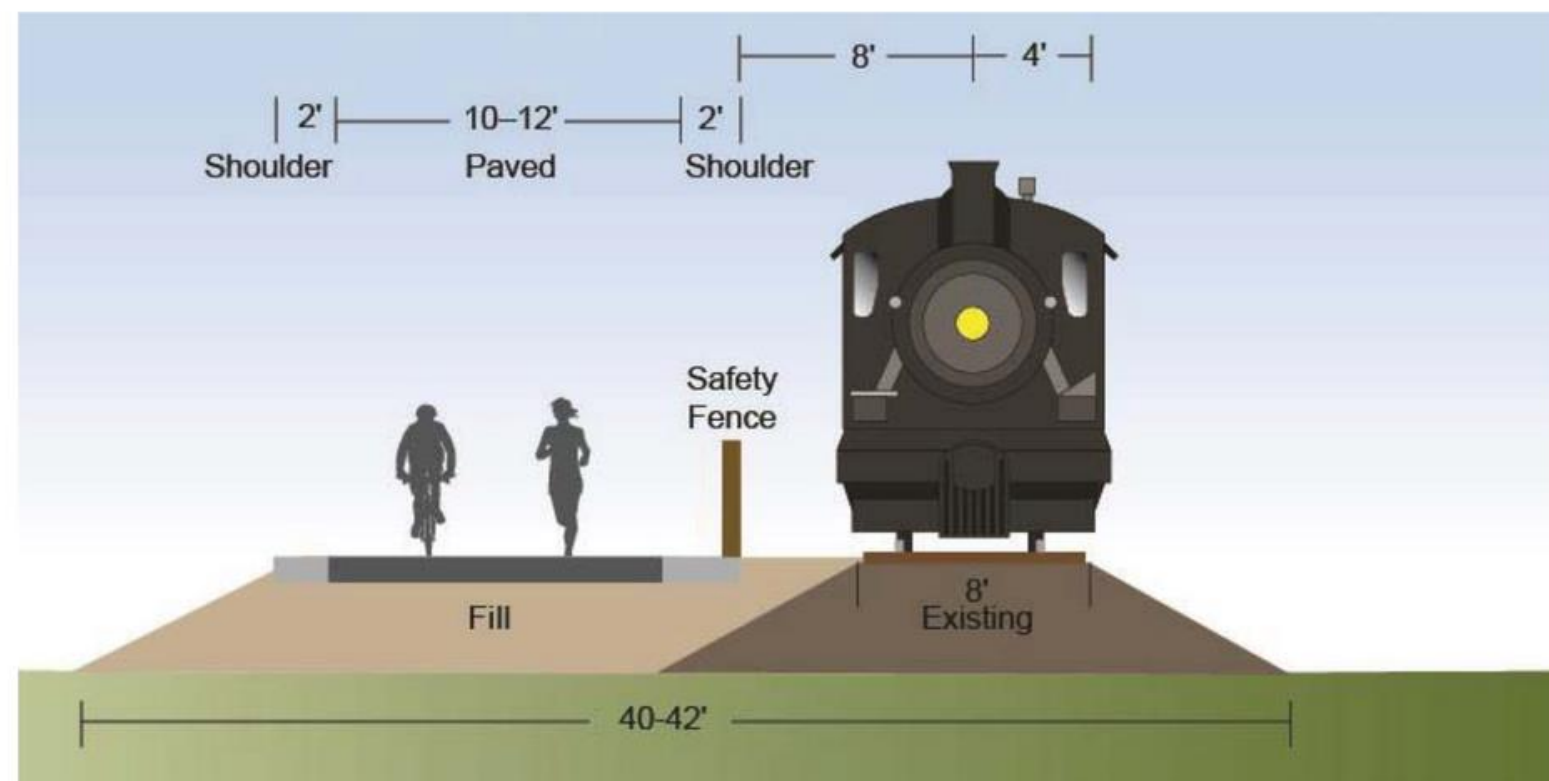
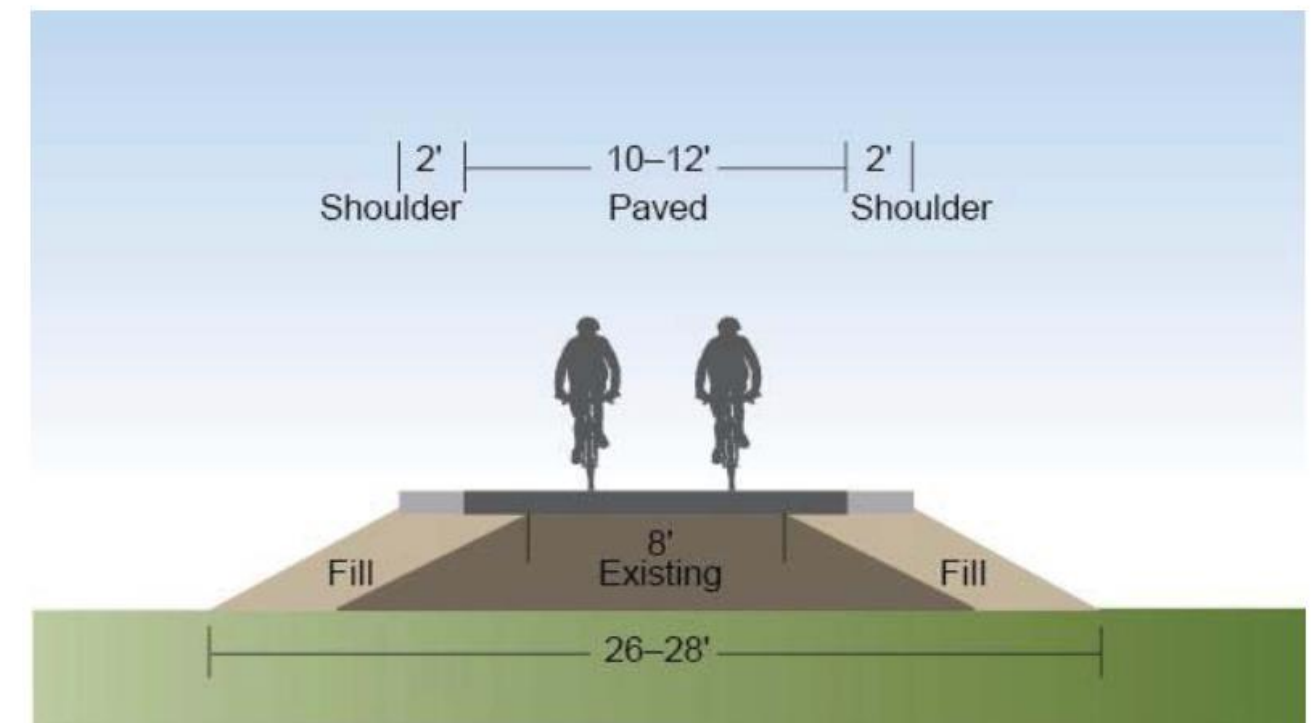


Figure 5-1. Rail-With-Trail | Widened Berm



Standard Rail-to-Trail





Subarea 1 – Downtown Wheeler



Subarea 3 – View of ocean from rail corridor



Subarea 4 – Smith Lake



Subarea 5 – Miami River bridge



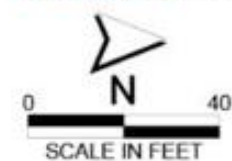


Figure 10. Buxton Trailhead Parking Concept Layout Plan

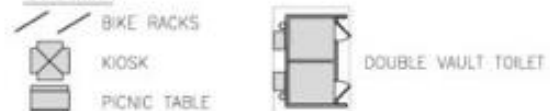
Williams Creek Trailhead



Parametrix DATE: August 18, 2022 FILE: PS8777001TRAILHEADS



LEGEND



**Buxton Trailhead Parking
Concept Layout Plan**
Washington County, OR

Manning Trailhead

IMPROVEMENTS



NEW TRAILHEAD

- Gravel Parking Area
- Bike Parking/Staging Area
- Picnic Tables
- Water Station
- Restrooms
- Signage/Trail Info
- New Trees
- Other stuff?

EXISTING TRAILHEAD

- Improved Gravel Parking
- Picnic Tables
- Water Station
- Improved Restrooms
- Signage/Trail Info



SalmonberryTrail



8.6

CIVILIANS

BY VOLUNTEERS

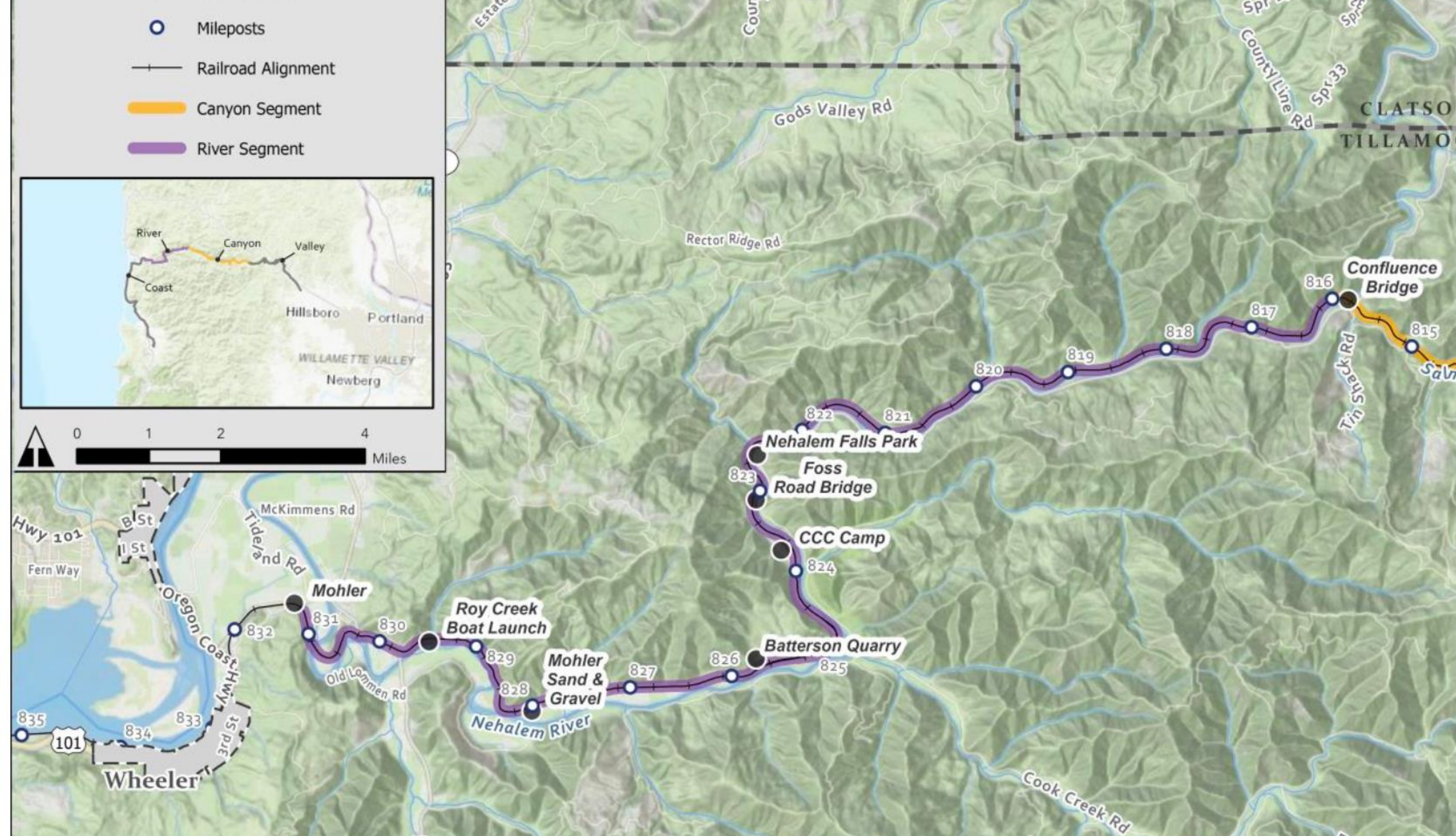
NEW DECKING



SalmonberryTrail

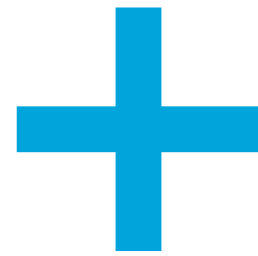


- Mileposts
- Railroad Alignment
- Canyon Segment
- River Segment

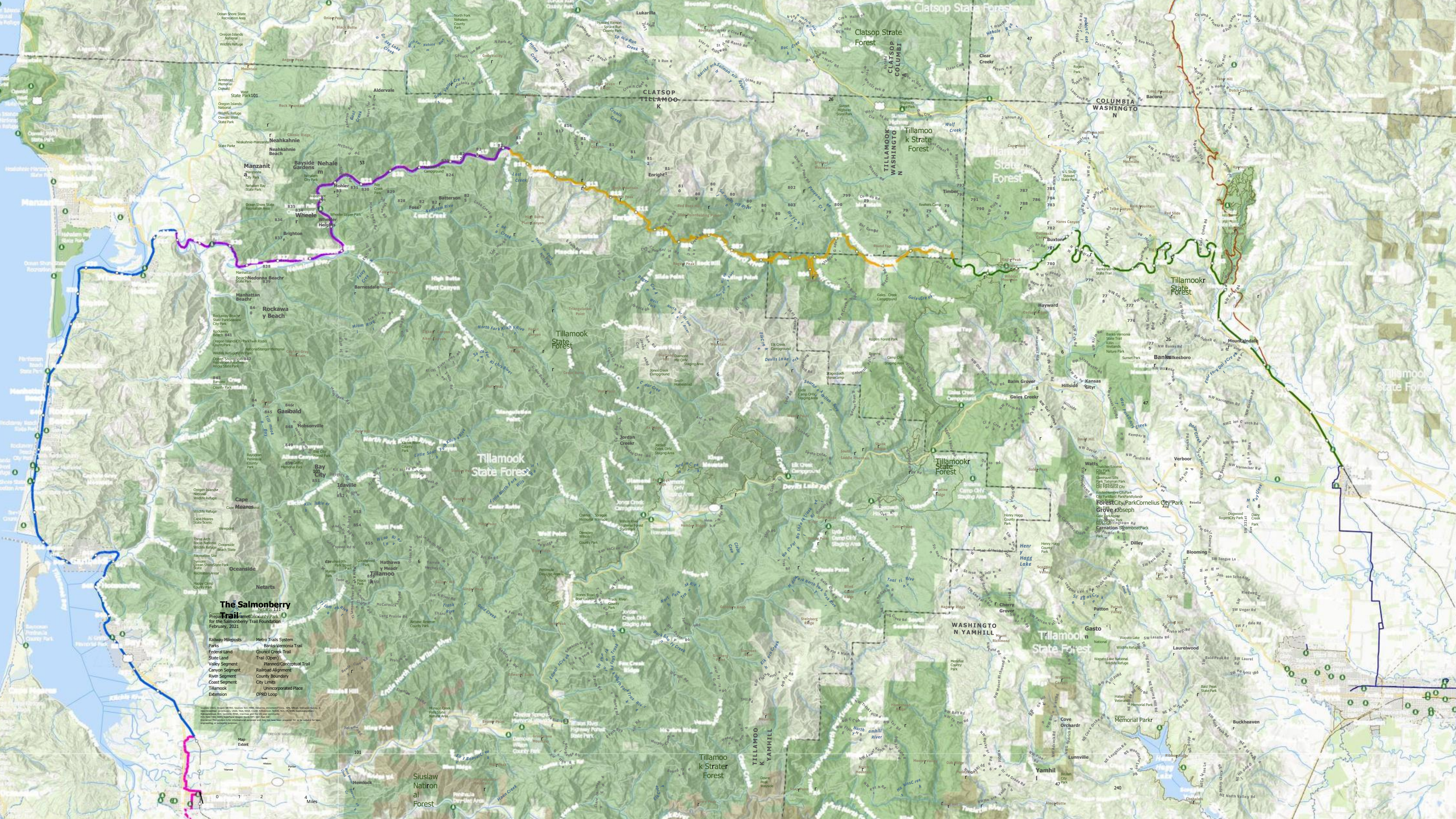


WE NEED LEADERS ON THE COAST

We Need Volunteers & Volunteer Coordinators.



**We Need Business Owners, Local Leaders, And
Residents To Add Their Names To Our Growing List
Of Supporters**



"Supporting the Salmonberry Trail is supporting the heart and soul of Oregon; it's a testament to our commitment to nature, community, and future generations."

- Aria Bennett







"For those of us who find solace in nature and believe in preserving our state's beauty for future generations, the Salmonberry Trail is a testament to Oregon's commitment to its land and people."

-Jake Thompson, Third-Generation Oregon Farmer







RAILBANKED AND READY TO BUILD

NOTICE

**THE SALMONBERRY TRAIL IS CURRENTLY CLOSED
TO ALL USERS**

67

TRESTLES

100 TUNNELS

SalmonberryTrail



















NOTICE

**THE SALMONBERRY TRAIL IS CURRENTLY CLOSED
TO ALL USERS**

"The Salmonberry Trail isn't just a path; it's a journey through Oregon's rich history and an open invitation to embrace nature's wonders."

- Liam Thompson











Congresswoman Suzanne Bonamici visits the Salmonberry Trail

Congresswoman Suzanne Bonamici is visiting a Salmonberry Trail in Clatsop County, Oregon, which is partially owned and visited or hosted by



ACREA
a wood
Perfect
surround
tall tree
its' side
timber
Across
Park wi
MLS #

RE
615 Ma
E-mail: