



**Tillamook  
County  
Public Safety  
Communication  
System**

## **Tillamook County Board of Commissioners**

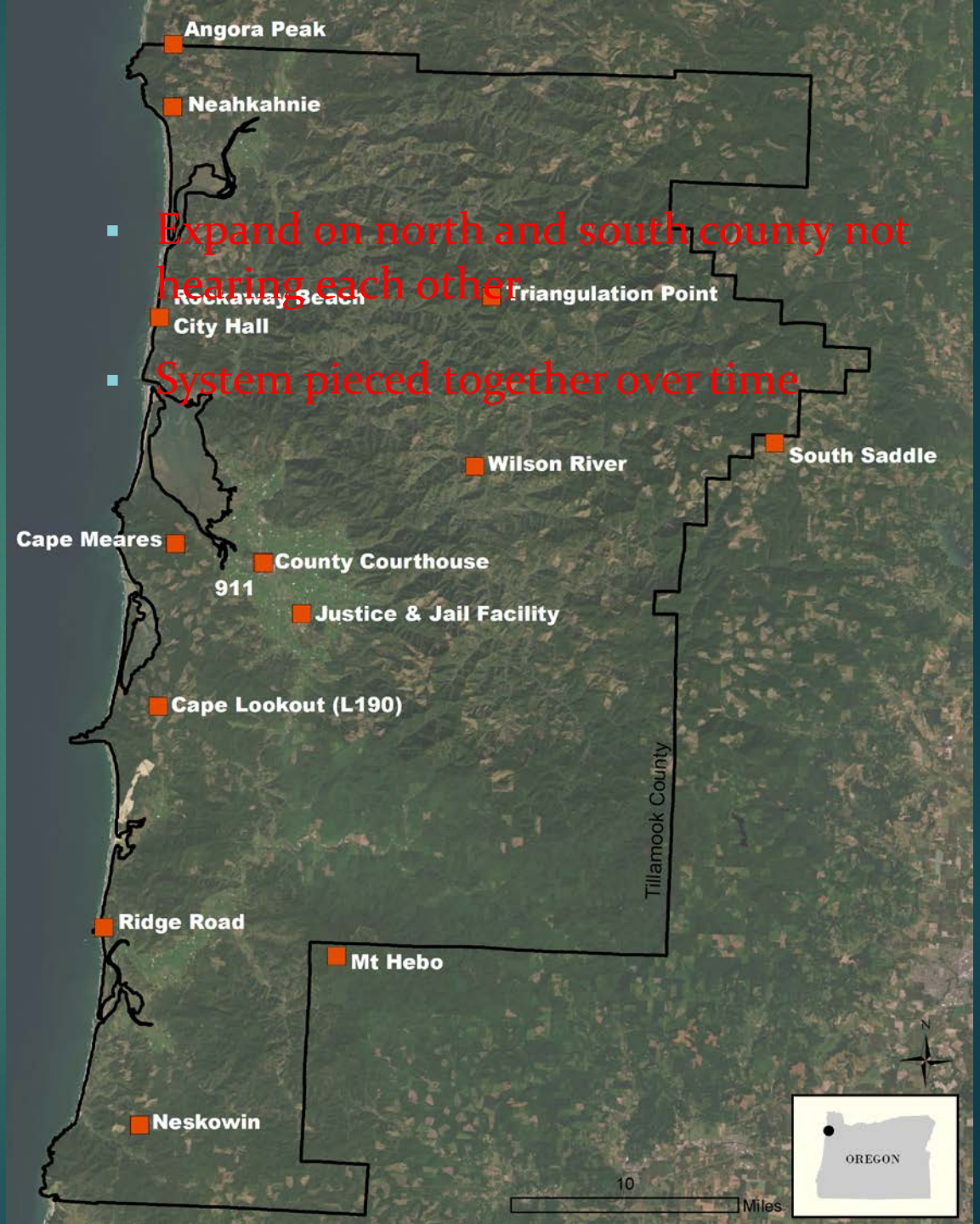
- ▶ David Yamamoto
- ▶ Bill Baertlein
- ▶ Mary Faith Bell

## **Tillamook County Communications Staff**

- ▶ Rachel Hagerty – Chief of Staff/Communications Director
- ▶ John D. Spence – Communications Systems Manager/Tech

# Communication System Sites

- 13 Sites (3 County Owned)
- 11 Towers with Leases (commercial, government, and private)
- 11 Sites with County VHF Radio Repeaters
- 4 Sites with Microwave Connectivity (backbone of 911 microwave network)
- 9 Sites with Commercial or “Shore” Power
- 4 Sites Rely on Off-Grid Battery (generator, solar, wind)
- 4 Sites with Fiber Optic Connectivity



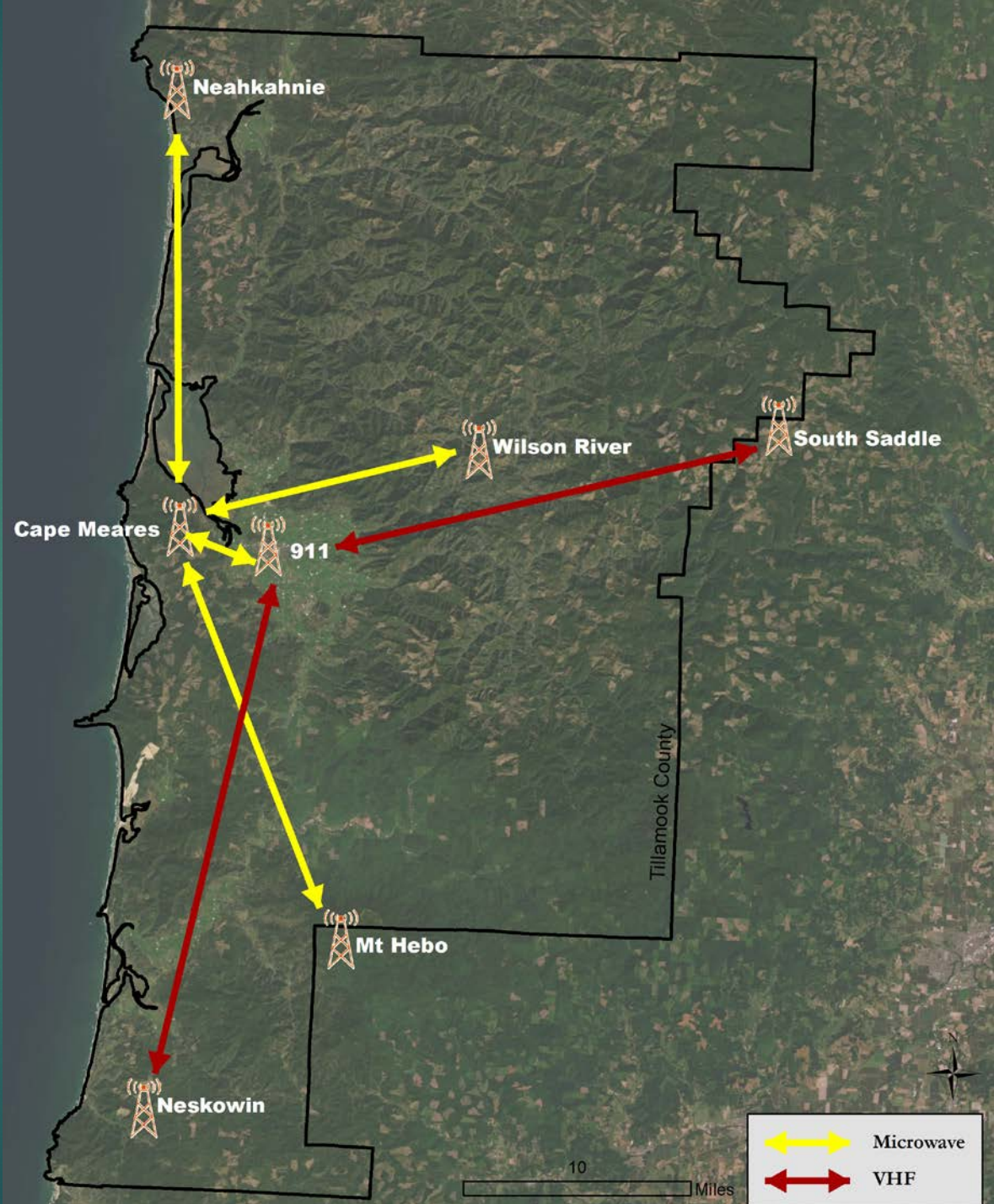
# VHF / Microwave Paths

## VHF

- Radio waves from 30-300 MHz
- Great for 1-60 mi or greater dependent upon topography, antenna design
- Power output can vary by need
- Examples: 88-104 MHz FM Radio
- Terrestrial Land Mobile Radio (LMR), marine channels, amateur
- Law enforcement, fire, ambulance

## Microwave

- Radio waves from 300 MHz - 300 GHz
- Travel by line of site, highly directional
- Point to point communications link/wireless networks

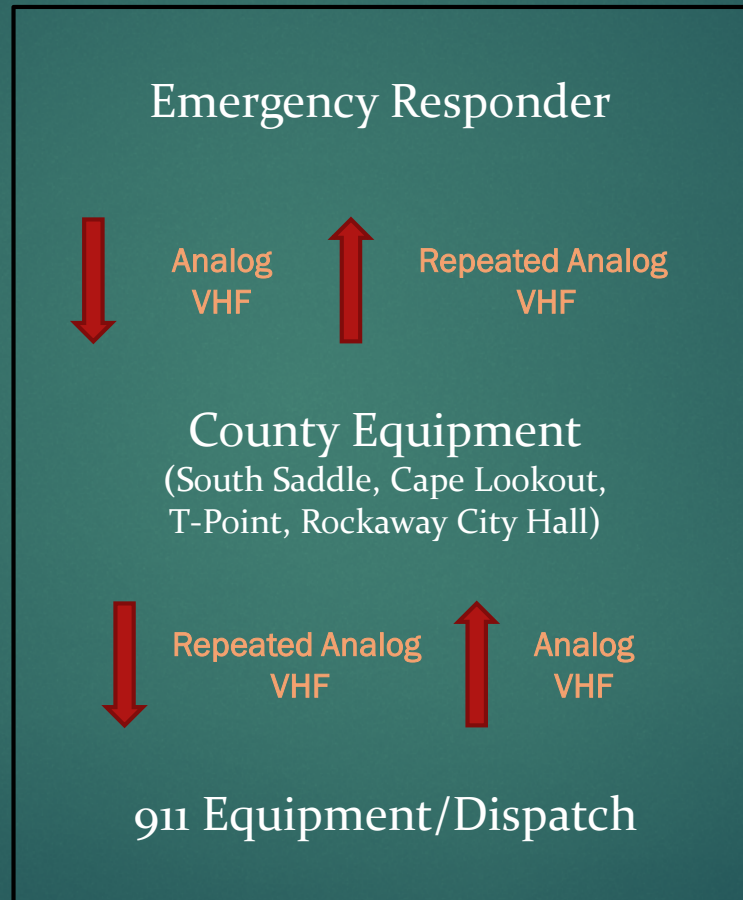


# How Does the Current System Operate?

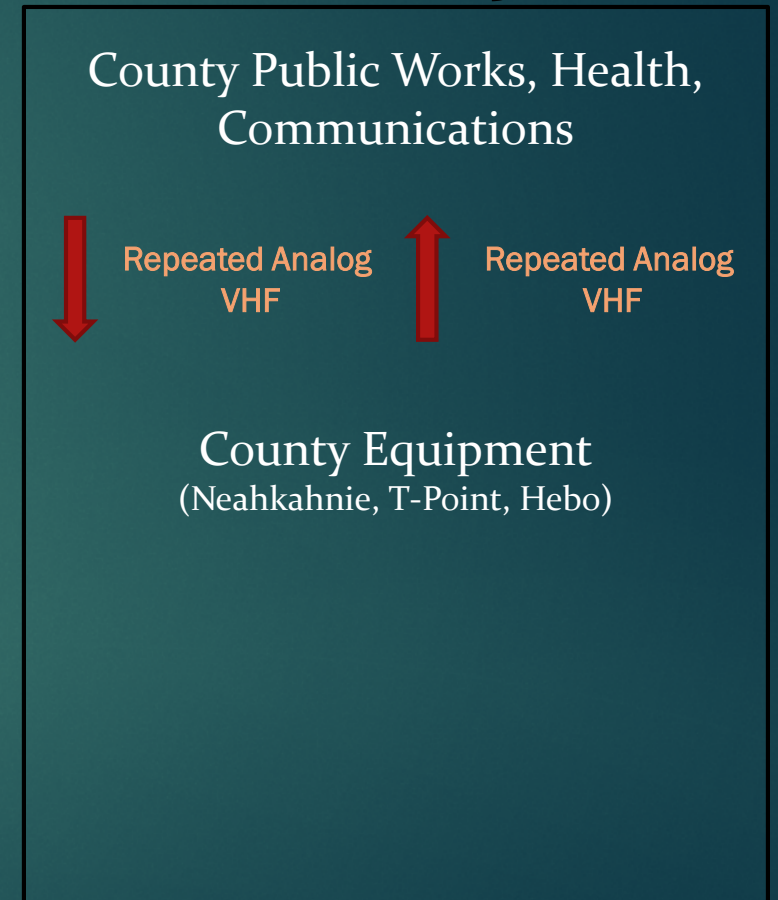
## OPTION 1



## OPTION 2



## OPTION 3



### LIMITATIONS

*Repeaters not linked, user must pick based on geographic area, resulting in poor/no coverage if wrong site chosen*

*No dispatch, only mobile units and VHF repeaters*

# Who Depends on the System?

## PRIMARY

- Tillamook County Sheriff's Office
- Tillamook 911
- Adventist Health Ambulance
- Manzanita Police
- Rockaway Beach Police
- Tillamook Police
- Nehalem Bay Fire & Rescue
- Nedonna Rural Fire
- Garibaldi Fire
- Tillamook Fire
- Netarts-Oceanside Fire
- Nestucca Rural Fire
- Residents & Visitors

## SECONDARY or POTENTIAL

- Tillamook PUD
- Oregon State Police
- ODOT
- ODF
- USFS
- BLM
- US Coast Guard
- Tillamook County Public Works
- Tillamook County Health
- Tillamook County Community Develop.
- Tillamook County Transportation
- Near Space Corp

**The  
uncomfortable  
reality is everyone  
will likely need  
law enforcement,  
fire, or medical  
response at some  
point**



# What's the County's Role?

## ▶ Site Maintenance & Management

- VHF repeaters, amplifiers, antennas, combiners, duplexing systems
- Buildings for radio and periphery equipment, primary and alternative power, power retention systems
- Troubleshooting, routine and emergency maintenance/repairs

## ▶ Administration

- FCC licenses, site rental leases

## ▶ Site Security

- Loss prevention, hardening of sites against potential sabotage

## ▶ Partnerships

- Tillamook 911, law enforcement, fire, Adventist Health Ambulance, Tillamook PUD, and numerous others

# What are the Issues?

- ▶ 2001: Voters approve 1-year property tax levy (\$0.25/1,000) to improve system
- ▶ 2002-2003: System augmented
- ▶ County owns VHF components and 911 owns microwave components
- ▶ Need a regional unified system

## Funding

- ▶ County General Fund pays nearly all costs of VHF components
- ▶ Tillamook 911 pays for all costs of microwave components
- ▶ No user fees

## Coverage

- ▶ Lacking reliable, overall county-wide coverage
- ▶ Radio waves require un-impeded air to travel
- ▶ Varying topography limits reach of VHF radio, cause signals to lose power, deviate, or be absorbed
- ▶ Critical areas with poor coverage: Miami Foley, Highway 6, Sand Lake, N. Pacific City, Little Nestucca



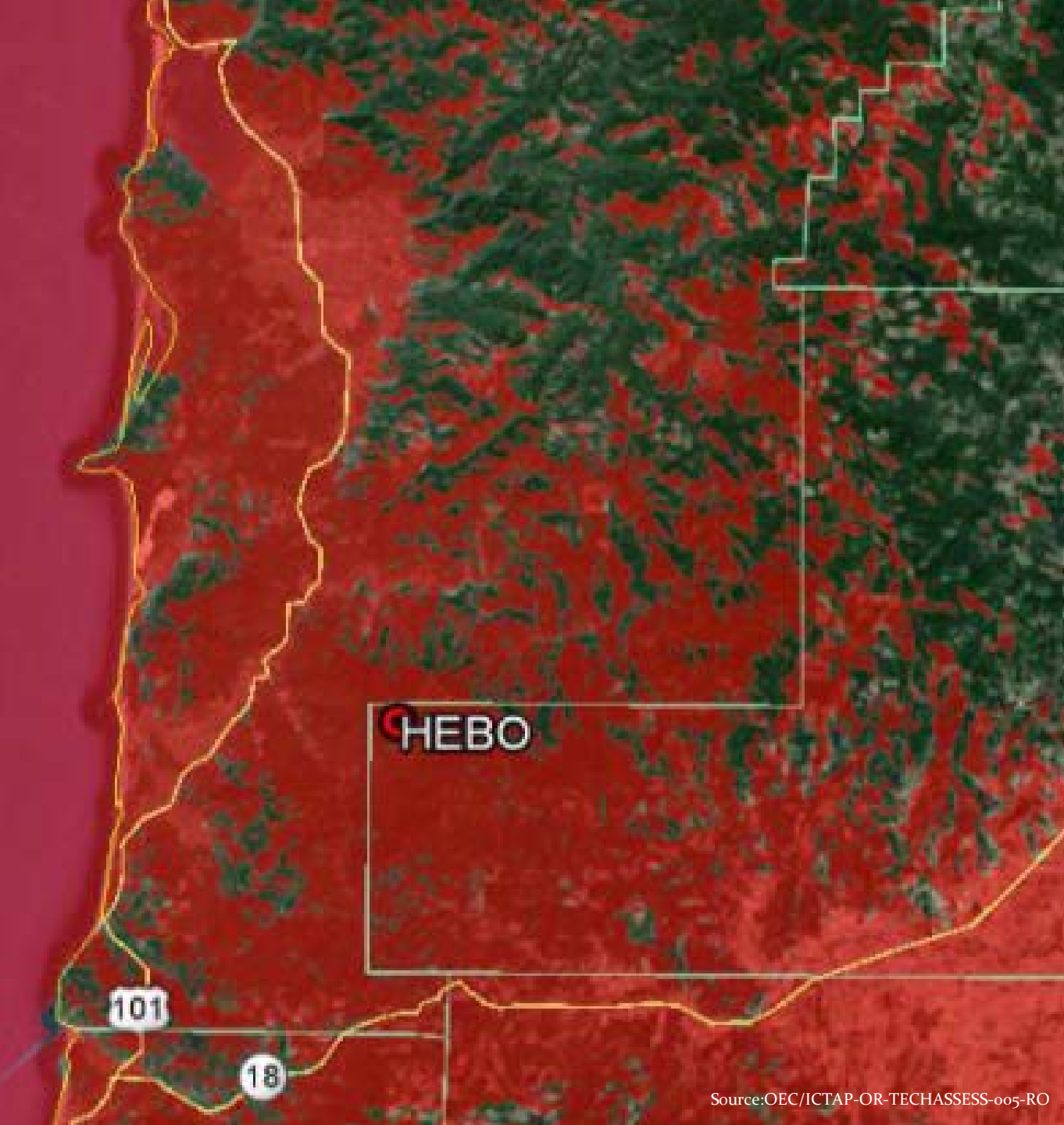
# Mt. Hebo Coverage Limitations

## Land Mobile Radio (LMR)

- ▶ Stationary unit mounted in a vehicle
- ▶ Transmit at up to 100 watts
- ▶ 4-5' mounted antenna

## Talk Out Coverage to Mobile

Red = Good  
Orange/Pink = Fair  
Green = Poor/None



# Mt. Hebo Coverage Limitations

## Portable Radios

- ▶ Handheld or body worn unit that transmits in a range of 5 watts
- ▶ Small antennas for ease of use
- ▶ Poor for dense areas and long-distance communications
- ▶ Experience attenuation (loss) due to the human body or gear
- ▶ 1<sup>st</sup> responders use when away from mobiles

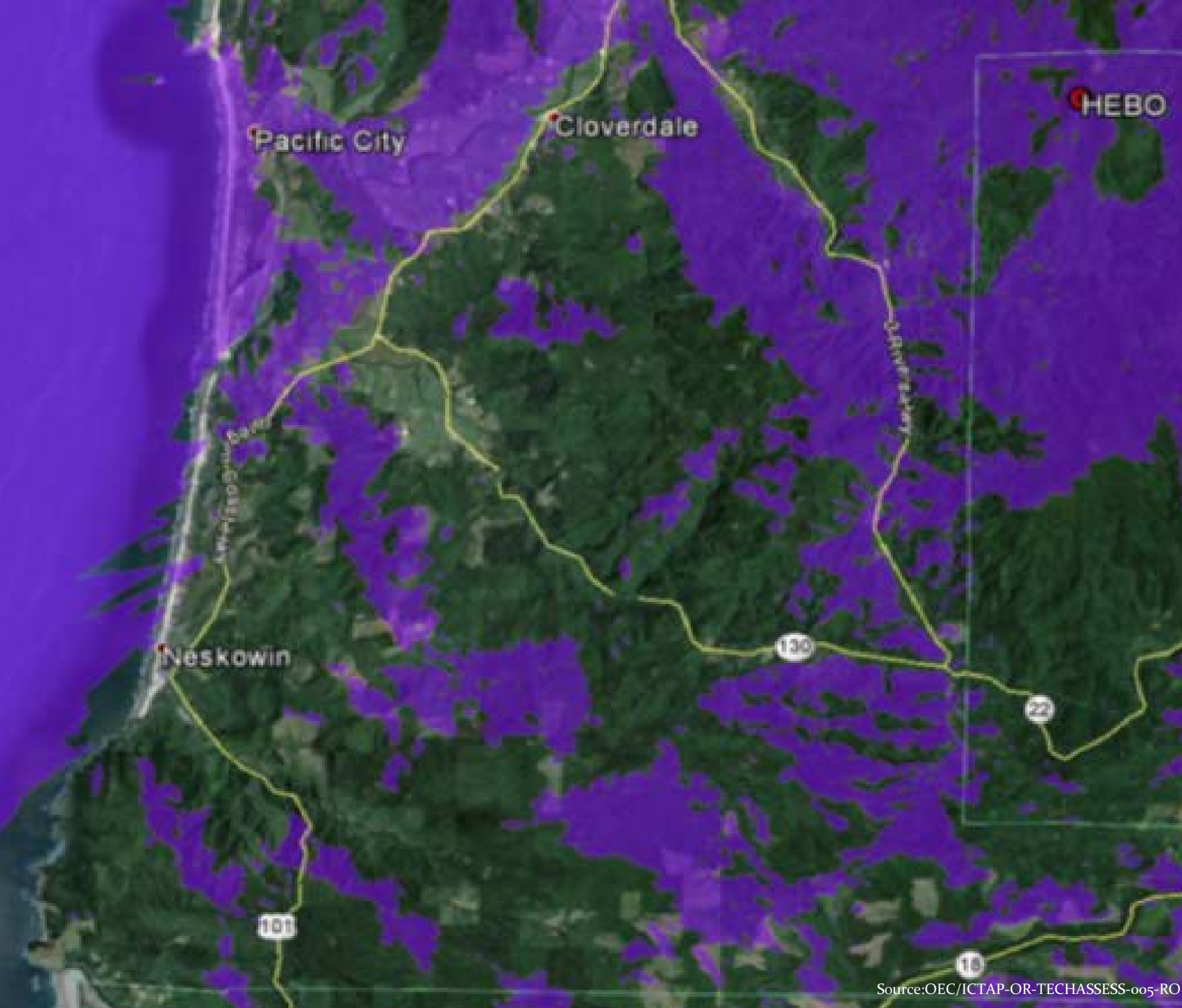
## Talk Out Coverage to Portable

Purple = Good

Lavender = Fair

Green = Poor/None





# Mt. Hebo Coverage Limitations

## Talk In Coverage from Mobile

- Dark Purple = Good
- Light Purple = Fair
- Green/Lt. Green = Poor/None

What Kind of Coverage Solution  
is Possible?

# EXAMPLE: Talk Out Coverage to Mobile

- Addition: New Repeater Site in Neskowin
- Result: Improved South County Coverage

Bright Red = Excellent  
Dark Red = Good  
Green/Lt. Green = Poor/None

Current



Neskowin Addition & Hebo



# Next Steps

## Project Team

- Leading effort to upgrade system
- Funding and public outreach for multi-year, multi-million project

## Strategy

- Phase 1: Assessment 3 months
  - Phase 2: Conceptual Design 2 months
  - Phase 3: Engineering Design
  - Phase 4: Construction
  - Long Term Maintenance
  - Future Technology Integration 15+ years
- 2 years

## Contract

- Phase 1 & 2: Federal Engineering, Inc.

# Tillamook County Project Team Contacts

- ▶ Rachel Hagerty
  - ▶ 503.842.3404 – [rhagerty@co.tillamook.or.us](mailto:rhagerty@co.tillamook.or.us)
- ▶ John D. Spence
  - ▶ 503.842.3481 – [jspence@co.tillamook.or.us](mailto:jspence@co.tillamook.or.us)

