

Source: FHWA

March 10, 2023

## Cape Meares Road Relocation

### Construction Activities & Upcoming Work

Construction activities resumed on February 27, 2023. The contractor has been stockpiling material in preparation for MSE Wall construction on the south side of the project resulting in increased truck traffic between the south project entrance and the adjacent Lighthouse Quarry. There is no public access within project limits, which includes no pedestrian or bike access. The fixed construction completion date is October 31, 2023.

#### ROAD CLOSURES

Current road closure points will remain in effect on Bayocean Road near the Cape Meares Lighthouse, and approximately 0.5 miles south of the Lighthouse. Construction will have minimal impact on public traffic as it is closed to through traffic. Please be advised that project limits are outside the gate on Cape Meares Loop coming south from Bayocean Road. See map on the following page for areas not accessible to the public.

Project Website:

<https://highways.dot.gov/federal-lands/projects/or/tillamook-b780-1>



View of stockpile overlooking South project entrance.

Western Federal Lands Highway Division

Source: FHWA

Project Number:  
OR TILLAMOOK B780  
(1)

FHWA Contact:  
John Henderson  
john.henderson@dot.gov  
360-839-3867

Project Partner:  
Tillamook County  
Federal Highway  
Administration  
Western Federal Lands  
Highway Division

Contractor:  
M.A. DeAtley Construction, Inc.  
829 Evans Rd,  
Clarkston, WA 99403

Notice to Proceed:  
December 6, 2021.

Fixed Completion Date:  
October 31, 2023

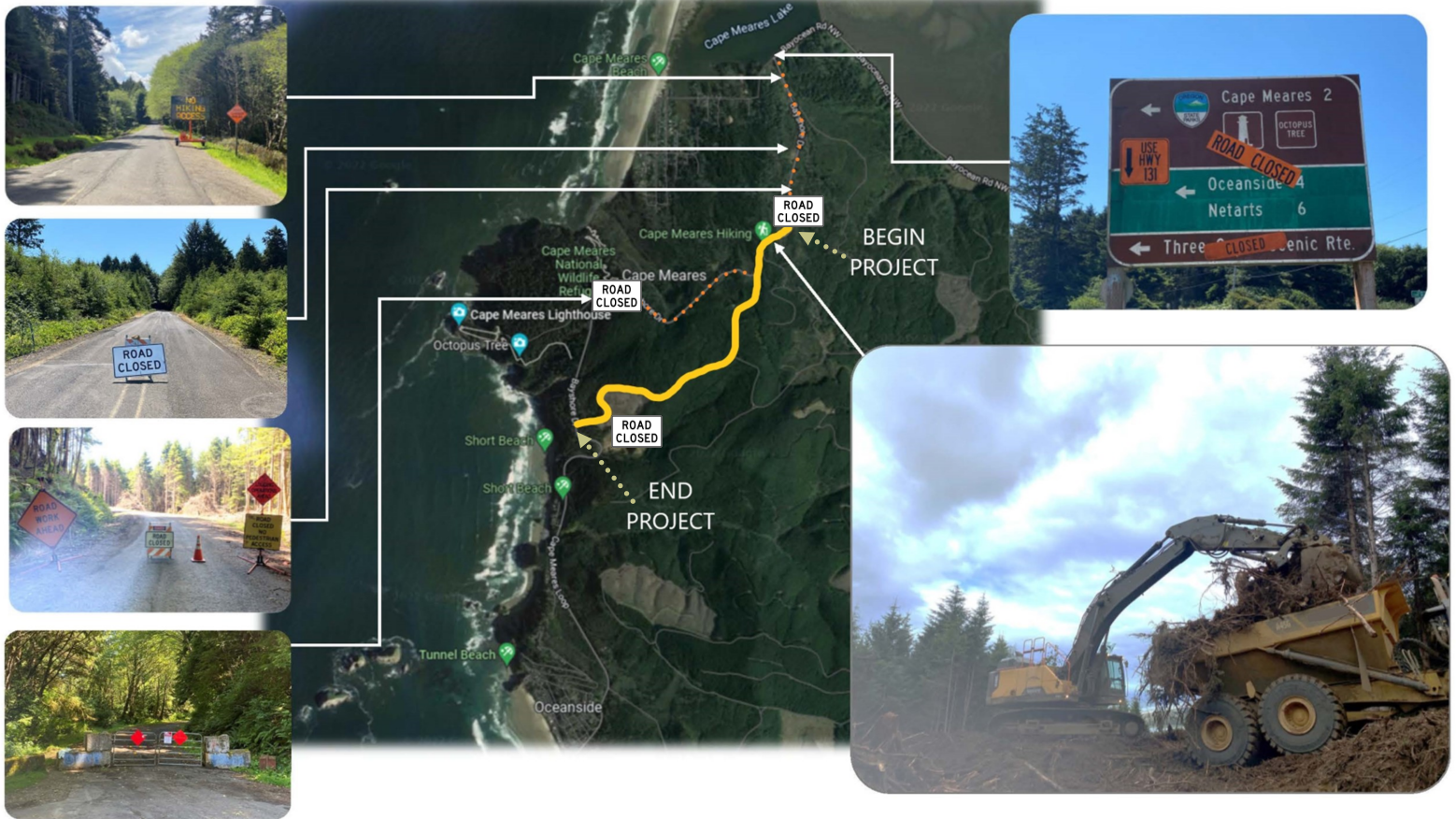


U.S. Department  
of Transportation

**Federal Highway  
Administration**

# OR TILLAMOOK B780(1), Cape Meares Road Relocation

## Map



Map Source: Google

All project images  
Source: FHWA

**Project location and areas closed off to the public.**

# OR TILLAMOOK B780(1), Cape Meares Road Relocation

## Pictures



**Aggregate  
sampling  
from quarry**

Source: FHWA



**Grading  
newly  
placed  
aggregate**