

Source: FHWA

Cape Meares Road Relocation

August 11, 2023

Construction Activities & Upcoming Work

Structural work on MSE Wall No. 1 was completed this week and the soldier pile wall is being prepared for reinforced concrete fascia placement by welding headed studs on each pile. In addition, roadway excavation continued throughout the project most visibly from the public’s perspective at the south entrance on Bayshore Drive near Oceanside. Truck traffic between the south project entrance and the adjacent Lighthouse Quarry will remain active but at reduced levels, however, construction traffic is scheduled to be steady on the closed portion of the old Cape Meares Loop. Therefore, Tillamook County has prohibited pedestrian and bicycle traffic on the old roadway through project completion in Fall 2023.

ROAD CLOSURES

Current road closure points will remain in effect on Bayocean Road near the Cape Meares Lighthouse, and approximately 0.5 miles south of the Lighthouse. Construction will have minimal impact on public traffic as it is closed to through traffic. Please be advised that project limits are now designated by barricades on Cape Meares Loop coming south from Bayocean Road. See map on the following page. Source: FHWA



Construction of final course for MSE Wall No. 1.

Project Website:

<https://highways.dot.gov/federal-lands/projects/or/tillamook-b780-1>

Western Federal Lands Highway Division

Project Number:
OR TILLAMOOK B780
(1)

FHWA Contact:
John Henderson
john.henderson@dot.gov
360-839-3867

Project Partner:
Tillamook County
Federal Highway
Administration
Western Federal Lands
Highway Division

Contractor:
M.A. DeAtley Construction, Inc.
829 Evans Rd,
Clarkston, WA 99403

Notice to Proceed:
December 6, 2021.

Fixed Completion Date:
October 31, 2023



U.S. Department
of Transportation

**Federal Highway
Administration**

OR TILLAMOOK B780(1), Cape Meares Road Relocation

Map



Source: FHWA

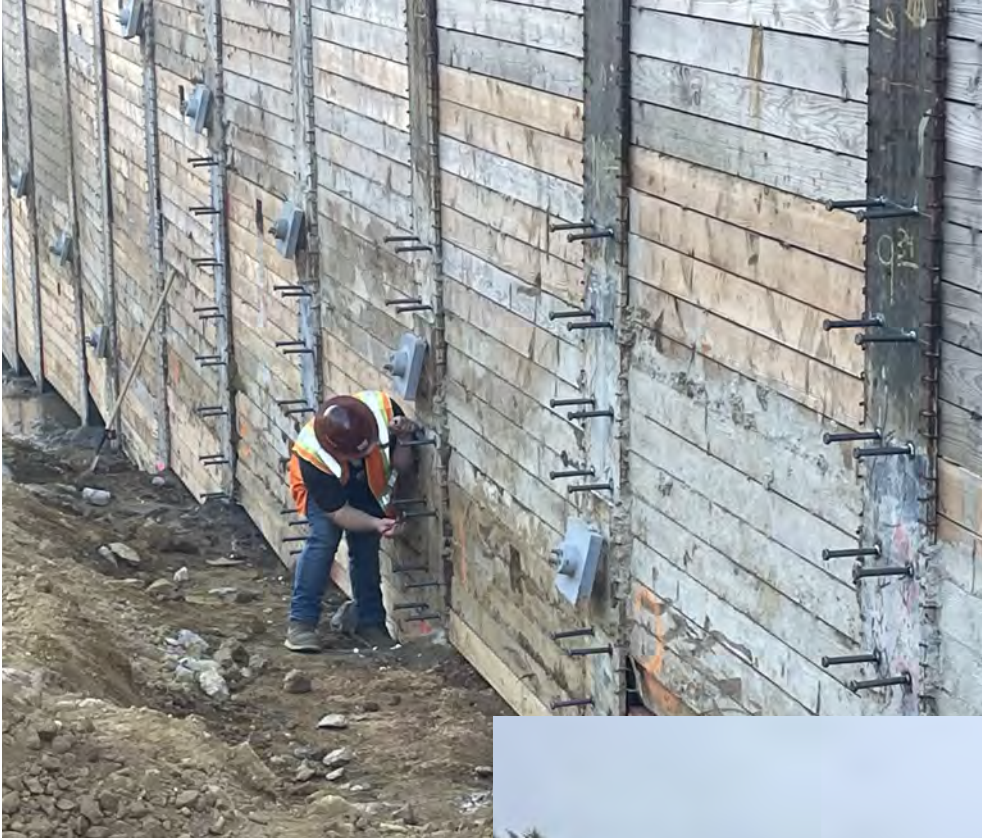
Map Source: Google

All project images
Source: FHWA

Project location and areas closed off to the public.

OR TILLAMOOK B780(1), Cape Meares Road Relocation

Pictures



View of welding inspector inspecting recently placed headed studs onto steel piles at the soldier pile wall.

Source: FHWA

View of roadway embankment excavation near the project limits on Bayshore Drive near Oceanside.



Source: FHWA