

United States Department of the Interior

FISH AND WILDLIFE SERVICE



Anan Raymond, Regional Archaeologist
Region 1+ Region 8 Cultural Resource Team
20555 Gerda Lane, Sherwood, OR 97140
phone:503-625-4377, fax:503-625-4887

email: anan_raymond@fws.gov cell:503-803-7913

To: **Amy Horstman**

6/11/2014

FWS Program - **ES**

Funding - **Partners**

From: R1/R8 Cultural Resources Team
Anan Raymond, Regional Historic Preservation Officer

Subject: **Notification of Compliance with Section 106 of the National Historic Preservation Act (NHPA)**

Thank you for submitting the RCRC form for the below listed project. We have reviewed the form and applied the terms of the Fish and Wildlife Service (FWS) Programmatic Agreement (PA)*. We note the following regarding tribal consultation for the project:

Tribal review forms and consultation memos were sent to Confederated Tribes of Grand Ronde (CTGR) and Siletz on 17 April 2014. No response has been received from either tribe as of 11 June 2014.

*Based on the location and nature of the activities, “**Appendix A**” applies to the following project as described:*

Mapes and Myrtle Creek Fish Passage, Kilchis River Tributaries

An Appendix A determination indicates that the FWS has evaluated the potential impact of the proposed project on cultural resources at the location listed above, and we do not anticipate that the project would affect or impact cultural resources. However, please take careful note of the issues raised during tribal consultation.

No further cultural resource identification effort is necessary for the project. However, the existence of cultural resources can never be predicted with certainty. Please be aware that cultural resources are protected by all applicable federal and state laws. In the event that cultural resources are discovered during project implementation, any ground disturbing activity should be halted and the FWS Regional Archaeologist should be notified at the above address. If the planned activities change, please let us know.

Please note that, in compliance with the terms of the PA, the project will be reported to the State Historic Preservation Office in the annual report, prepared and submitted after the end of the current fiscal year. Thank you for considering cultural resources.

**Programmatic Agreement Among the U.S. Fish and Wildlife Service Region 1, the Advisory Council on Historic Preservation, and the State Historic Preservation Officer Regarding the Administration of Routine Undertakings in the State of Oregon*

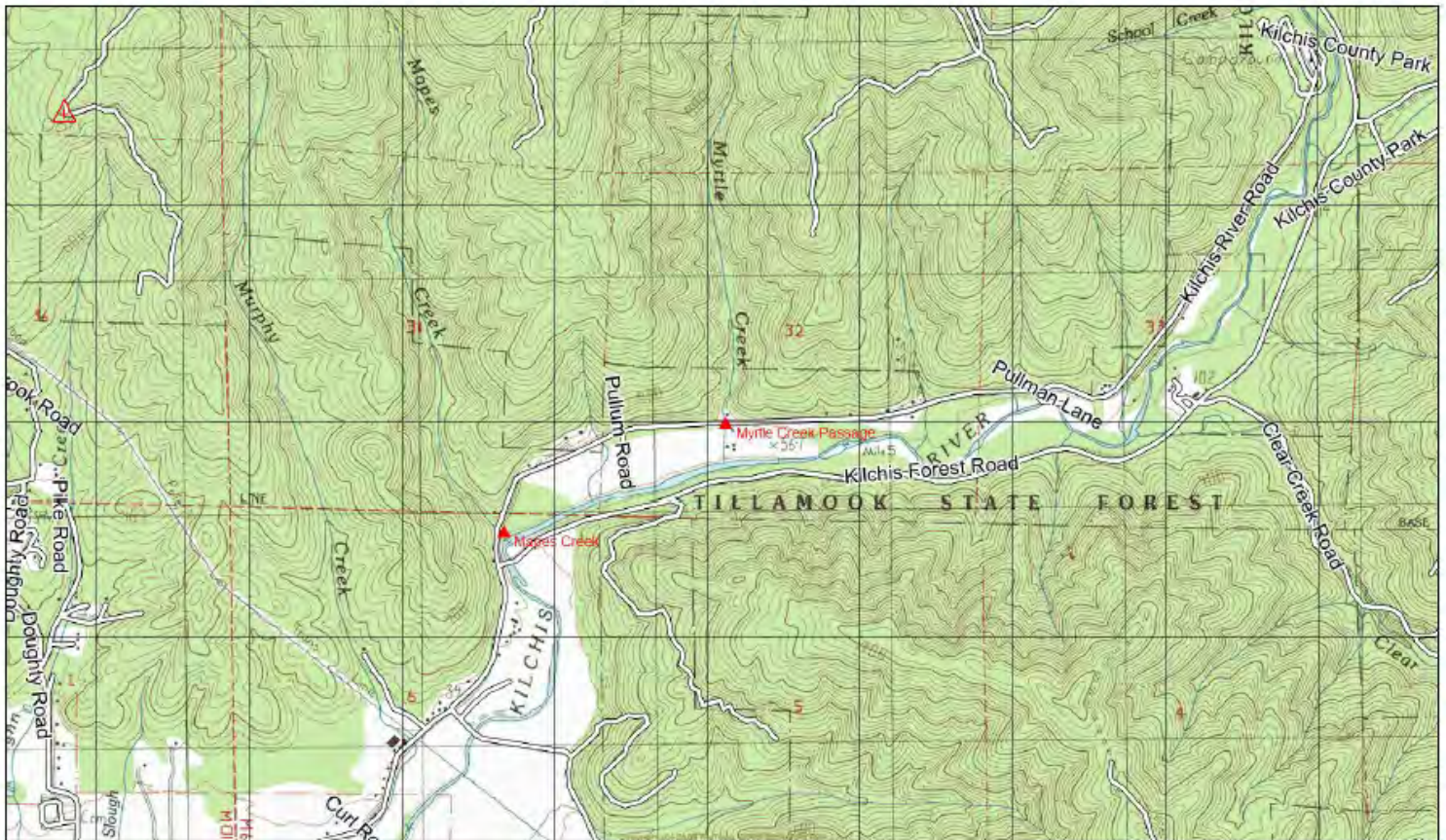


PROJECT NAME: Mapes and Myrtle Creek Fish Passage, Kilchis River Tributaries

LOCATION INFORMATION:		<i>FWS Unit</i>	CR FPO	<i>Township</i>	<i>Range</i>	<i>Section</i>	PROJECT ACRES
<i>County</i>	Tillamook	<i>USGS Topo</i>	Kilchis River	1S	9W	6	<i>Total</i>
<i>State</i>	Oregon			1S	9W	32	1
<i>Appendix Item</i>	<i>Program Funding</i>	<i>ES</i>	<i>Field Contact</i>				<i>APE</i>
A 8		Partners	Horstman, A				1

Mapes Township 1S, Range 9W, Section 6 (Nw1/4 of NE ¼), Kilchis River quadrangle, 45.5207200N/123.8277767W

Myrtle Township 1N, Range 9W, Section 32 (SE1/4 of SW1/4), Kilchis River quadrangle, 45.5248541N/123.8156162W



Note: Section 106 compliance assistance is being provided solely for the activities as defined in the request for cultural resource compliance submitted to the CRT for the project. Changes to the planned activities and any future projects in this area may be subject to additional Section 106 compliance efforts.



PROJECT NAME: Mapes and Myrtle Creek Fish Passage, Kilchis River Tributaries

LOCATION INFORMATION:		<i>FWS Unit</i> CR FPO	<i>Township</i> 1S	<i>Range</i> 9W	<i>Section</i> 6	PROJECT ACRES
<i>County</i> Tillamook		<i>USGS Topo</i> Kilchis River	1S	9W	32	<i>Total</i> 1
<i>State</i> Oregon						
<i>Program</i> ES		<i>Field Contact</i> Horstman, A				APE
<i>Funding</i> Partners						1

Myrtle Creek Fish Passage: Aerial



Note: Section 106 compliance assistance is being provided solely for the activities as defined in the request for cultural resource compliance submitted to the CRT for the project. Changes to the planned activities and any future projects in this area may be subject to additional Section 106 compliance efforts.



PROJECT NAME: Mapes and Myrtle Creek Fish Passage, Kilchis River Tributaries

LOCATION INFORMATION:		<i>FWS Unit</i> CR FPO	<i>Township</i>	<i>Range</i>	<i>Section</i>	PROJECT ACRES
<i>County</i> Tillamook		<i>USGS Topo</i> Kilchis River	1S	9W	6	<i>Total</i>
<i>State</i> Oregon			1S	9W	32	1
<i>Program</i> ES		<i>Field Contact</i>				APE
<i>Funding</i> Partners		Horstman, A				1

Myrtle Creek Fish Passage: Site Photos. Listed as Barrier #591 in Tillamook Bay Barrier Assessment. Blocks 1 mile of upstream habitat.

Existing Culvert: 66" corrugated round culvert by 41' long. Poor condition with 3.3% slope and 3.7' perch. Proposed to replace with a bridge.



Note: Section 106 compliance assistance is being provided solely for the activities as defined in the request for cultural resource compliance submitted to the CRT for the project. Changes to the planned activities and any future projects in this area may be subject to additional Section 106 compliance efforts.



PROJECT NAME: Mapes and Myrtle Creek Fish Passage, Kilchis River Tributaries

LOCATION INFORMATION:		<i>FWS Unit</i> CR FPO	<i>Township</i> 1S	<i>Range</i> 9W	<i>Section</i> 6	PROJECT ACRES
<i>County</i> Tillamook	<i>USGS Topo</i> Kilchis River		1S	9W	32	<i>Total</i> 1
<i>State</i> Oregon						
<i>Program</i> ES		<i>Field Contact</i> Horstman, A				APE 1
<i>Funding</i> Partners						

Mapes Creek Fish Passage: Site Photos. Listed as Barrier #603 in Tillamook Bay Barrier Assessment. Blocks 0.7 miles of upstream habitat.

Existing Culvert: 54" corrugated round culvert by 50' long. Poor condition with 2.5% slope. Culvert is ~60% filled with sediment. Hydraulics are passage barrier for fish. Proposed to replace with a bridge.



Note: Section 106 compliance assistance is being provided solely for the activities as defined in the request for cultural resource compliance submitted to the CRT for the project. Changes to the planned activities and any future projects in this area may be subject to additional Section 106 compliance efforts.