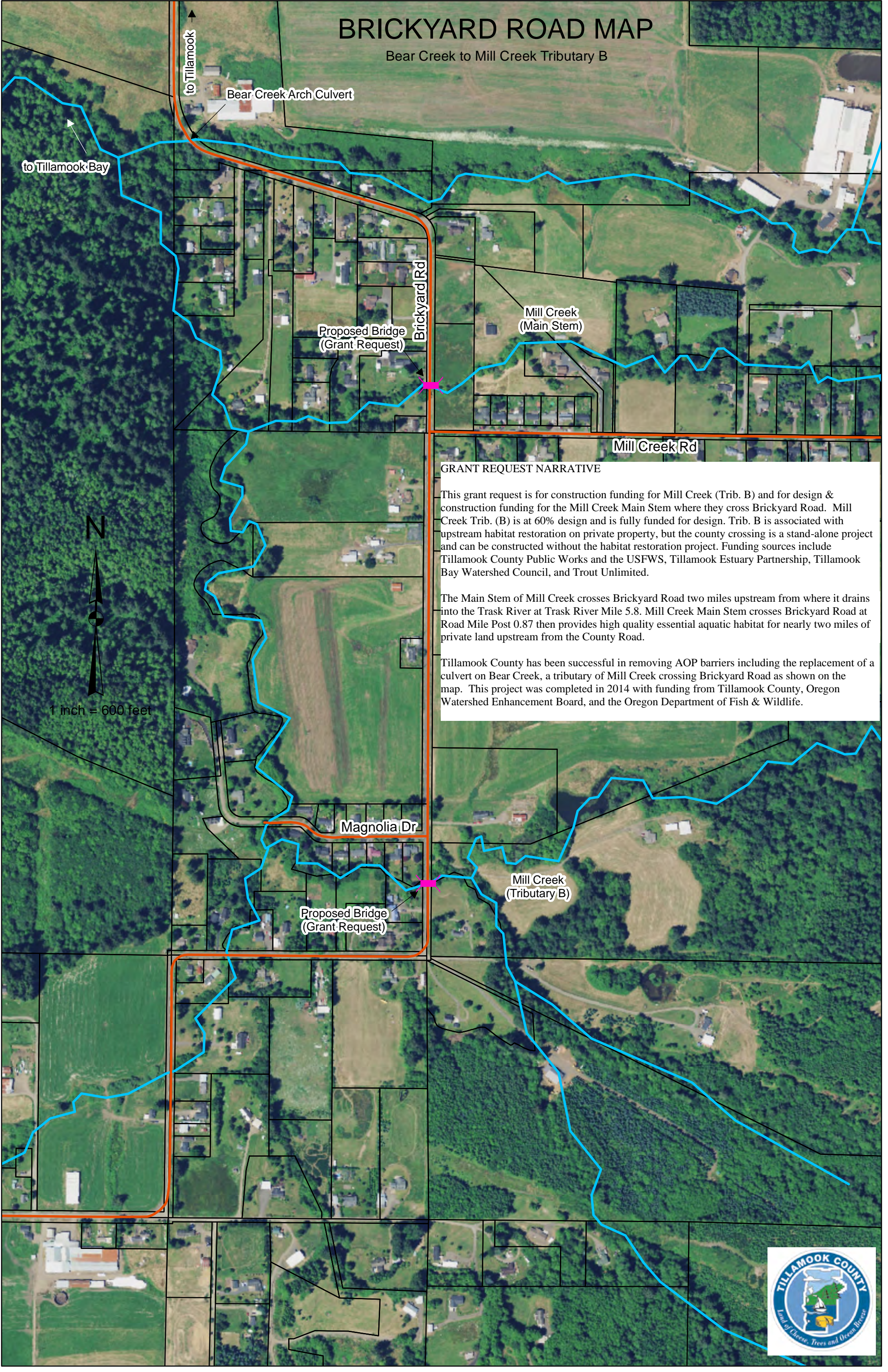


BRICKYARD ROAD MAP

Bear Creek to Mill Creek Tributary B



GRANT REQUEST NARRATIVE

This grant request is for construction funding for Mill Creek (Trib. B) and for design & construction funding for the Mill Creek Main Stem where they cross Brickyard Road. Mill Creek Trib. (B) is at 60% design and is fully funded for design. Trib. B is associated with upstream habitat restoration on private property, but the county crossing is a stand-alone project and can be constructed without the habitat restoration project. Funding sources include Tillamook County Public Works and the USFWS, Tillamook Estuary Partnership, Tillamook Bay Watershed Council, and Trout Unlimited.

The Main Stem of Mill Creek crosses Brickyard Road two miles upstream from where it drains into the Trask River at Trask River Mile 5.8. Mill Creek Main Stem crosses Brickyard Road at Road Mile Post 0.87 then provides high quality essential aquatic habitat for nearly two miles of private land upstream from the County Road.

Tillamook County has been successful in removing AOP barriers including the replacement of a culvert on Bear Creek, a tributary of Mill Creek crossing Brickyard Road as shown on the map. This project was completed in 2014 with funding from Tillamook County, Oregon Watershed Enhancement Board, and the Oregon Department of Fish & Wildlife.

